

# COINS & ANTIQUITIES

Friday 19 March 2010  
The Swedenborg Hall  
20-21 Bloomsbury Way  
London WC1A 2TH

Coins: 10.30am  
Antiquities: 2.30pm

## Head Office

TimeLine Auctions Limited  
PO Box 193  
Upminster  
RM14 3WH, UK

## Website

[www.timelineauctions.com](http://www.timelineauctions.com)

## Viewing

Thursday 18 March 11am to 5pm  
Friday 19 March 9am to 10.30am  
Friday 19 March 1:30pm to 2:30pm

## Reception

Thursday 18 March 6pm to 9pm

## Bids

+44 (0) 1708 222824  
+44 (0) 1708 225689 fax  
[bids@timelineauctions.com](mailto:bids@timelineauctions.com)

Please note that bids should be submitted no later than 9pm on Thursday 18<sup>th</sup> March.

Bidding by telephone will only be accepted on a lot with a lower estimate in excess of £400, and by arrangement prior to 17<sup>th</sup> March.

**Sale Number:** 1 & 2

**Catalogue:** £15

## Head of Department

Coins: Christopher Wren  
Antiquities: Brett Hammond

## Auctioneer

Robin Baker

## Enquiries

+44 (0) 1708 222384  
[enquiries@timelineauctions.com](mailto:enquiries@timelineauctions.com)  
Coins: Tanja Majjala  
Antiquities: Janai McKenna

Please see page 2 for bidder information including after-sale collection and shipment

Please see back of catalogue for Terms and Conditions and Commission Form

## Illustrations

Front cover: Lot 24 and Lot 588  
Back cover: Lot 581

## TimeLine Auctions Limited

Registered No. 6873501  
VAT Registered No. 979 3197 56  
Registered Office: Berry Lodge  
St Mary's Lane, Upminster, RM14 3PH

## Coins: Friday 19 March 2010 at 10.30am

<b>Greek</b>	<b>3</b>
<b>Celtic</b>	<b>7</b>
<b>Roman</b>	<b>13</b>
<b>Medieval</b>	<b>22</b>
<b>Milled</b>	<b>33</b>
<b>Books &amp; Cabinets</b>	<b>37</b>

## Antiquities: Friday 19 March 2010 at 2.30pm

<b>Egyptian</b>	<b>42</b>
<b>Classical</b>	<b>45</b>
<b>European</b>	<b>57</b>
<b>Americas &amp; The East</b>	<b>74</b>
<b>Antiquities - Late Entries</b>	<b>86</b>

### Bidding

This is a rostrum auction and there will be no live internet bidding. The buyer's premium is 15% and is subject to VAT. Bidders are reminded that our website carries high-resolution enlargeable colour images of all of the items illustrated in this catalogue, together with other items. A Commission Form is included at the back of this catalogue and can be mailed, faxed or emailed, to reach us by no later than 9pm on 18th March 2010. Alternatively, please register on our website and bid in person or record your absentee bids via your online account: [www.timelineauctions.com](http://www.timelineauctions.com). Please do not consider your bid to have been successfully lodged unless you have received an acknowledgement from us.

### Collection and Storage

All lots will be available for collection from The Swedenborg Hall up to 6pm on the day of the sale, after which they will be sent for storage. Lots will be available from our Essex premises from Monday 22nd March until 9th April, after which storage charges will apply. Shipping quotes can be arranged by contacting Tanja Maijala: [shipping@timelineauctions.com](mailto:shipping@timelineauctions.com)

### Notice to Buyers

Some lots will require export licences in order to leave the UK or Europe, please contact us for advice if required. We try to provide information regarding general condition, restorations, repairs and damage for each lot but this is necessarily subjective. The absence of specific information does not suggest that the lot is free from defects or that it is in good condition. Bidders should satisfy themselves in all respects by personal inspection before bidding.

### How to Find Us

The Swedenborg Hall is located in the heart of London, only about 200 meters from Great Russell Street and The British Museum. The nearest London Underground Stations are Holborn and Russell Square.

### Local Hotels

There are several hotels within a short walking distance including The Holiday Inn and The Thistle Hotel in Bloomsbury



# Antiquities

Afternoon Session  
2:30pm



Lots  
500 - 694

500



502



503



**500 Egypt - Osiris - Bronze Statuette.** 120mm (excluding base). Late Period (circa 664-343 BC). Cast bronze of Osiris wearing the atef crown and false plaited beard, carrying the symbolic crook and flail; standing on a later tiered wooden base. Cf Schoske; cf Berman. Fine and well detailed.

£600 - £800

**501 Egypt - Isis, Wedjat and Osiris - 3 Bronze Statuettes.** 90, 75 & 85mm; 42, 25 & 40 grams. Late Period (circa 664-343 BC). Three cast bronze statuettes: the first is of Isis wearing the headdress of Hathor, seated and holding the infant Horus; the second of Wadjet (possibly Meretseger?) with cobra head and wearing a short kilt; the third of Osiris standing wearing the atef crown and holding flail and crook; all with projecting studs for mounting on bases. Generally fine; the Isis figure with some minor loss to headdress.

£500 - £700

501



**502 Egypt - 2 Clay Shabtis.** 110mm tall. New Kingdom, 20th Dynasty (1186-1070 BC). Two mummiform clay shabtis with traces of inscriptions and original pigment. Cf. Stewart. Fine.

£200 - £300

**503 Egypt - 2 Clay Shabtis.** 110mm tall. New Kingdom, 20th Dynasty (1186-1070 BC). Two mummiform clay shabtis, one with short skirt and one with traces of inscription and original pigment. Cf. Stewart. Fine.

£200 - £300

**504 Egypt - 4 Clay Shabtis.** Average 80mm tall. Circa 20th Dynasty (1186-1070 BC). A group of four clay shabtis, including two with short kilts. Cf. Stewart. Fine and well modelled.

£200 - £300



505

**505 Egypt - Inscribed Shabti Figurine.** 100mm. 19th/20th Dynasty (circa 1295-1070 BC). Blue glazed composition shabti with black wig, wearing a kilt with a frontal column of hieroglyphic text; mounted on an old wooden base. Cf. Stewart. Fine with small repair at foot.

£600 - £800



506

**506 Egypt - Inscribed Shabti Figurine.** 155mm. Late Period (circa 664-343 BC). Pale green glazed composition shabti holding a pick and hoe and with a seed bag suspended from the left shoulder; the frontal column is impressed with hieroglyphic text. Fine, with old repair to lower section.

£600 - £800

**507 Egypt - 3 Shabti Figurines.** 103mm, 97mm and 91mm. 21st Dynasty (circa 1069 - 945 BC). Three blue glazed composition shabtis, each holding a pick and hoe with a seed bag suspended from the left shoulder, all detailed in black with frontal columns of hieroglyphic text. Cf. Petrie; cf. Stewart. Generally fine, the largest repaired.

£500 - £700



507

**508 Egypt - 2 Shabti Figures.** 80mm tall. Late Period (circa 664-343 BC). Two pale blue glazed unscripted composition mummiform shabti figures. Cf. Petrie; cf. Stewart. Generally fine; one with old repair.

£50 - £100



510



511

**509 Egypt - Bead Necklace.** 100cm. Mainly Late Period (circa 664-343 BC). A long necklace of Egyptian multicoloured faience disc beads, together with rounded and faceted carnelian and other stone beads at intervals (these possibly not of Egyptian origin); mounted on a modern string with a modern clasp, well matched and the beads generally of good colour. Cf. Dubin. Fine.

£100 - £200

**510 Egypt - Necklace, Amulets and Small Items.** Necklace 124 cm long. Mainly Late Period (circa 664-343 BC). A re-strung faience bead necklace, interspaced with various amulets; TOGETHER WITH: a small blue faience head; a small bronze head with upper body, a scarab and a large amulet. For the beads, cf Dubin; for the amulets, cf Flanders Petrie. Generally fine.

£200 - £300



512



513

**511 Egypt - 10 Amulets.** Papyrus sceptre 25mm. Middle Kingdom - Late Period (circa 2000-300 BC). A group of ten amulets in various materials, some glazed, including a papyrus sceptre, three Eye of Horus, a sphinx, three figures; all pierced for suspension. Cf Flinders Petrie; cf Andrews. Generally fine.

£200 - £300

**512 Egypt - 8 Amulets and 1 Seal.** Papyrus sceptre 35mm. Middle Kingdom - Late Period (circa 2000-300 BC). A group of eight amulets in various materials, some glazed, including a papyrus sceptre, three Eye of Horus, a sphinx, three figures; all pierced for suspension; the seal circular with cruciform pattern. Cf Flinders Petrie; cf Andrews. Fine.

£200 - £300

**513 Egypt - 12 Scarabs.** From 8 to 14mm; from 0.5 to 1.3 grams. Middle Kingdom - Late Period, (circa 2000-300 BC). A group of twelve mixed scarab seals, one bifacial, in various materials, some glazed; two with ornamental patterns in place of hieroglyphic inscriptions; all pierced longitudinally. Cf Flinders Petrie. Very fine.

£250 - £350





514

**514 Hellenistic - Gold Necklace With Beads.** 585mm long; 6.72 grams. Graeco-Roman Period (circa 2nd century BC). A delicate necklace of fine gold wire links, strung with alternating blue glass beads, the clasp of hook-and-eye form with two embossed discs displaying beaded borders. Very fine.

£500 - £800

**515 Greek - Gold Finger Ring - Incuse Female Head.** Internal 18mm diameter; 6.29 grams. (Circa 3rd-2nd century BC). The plain hoop developing into an oval bezel, with an incuse depiction of a female profile head, wearing a necklace and with tied hair. Cf. Higgins. Very fine, a few minor scuffs.

£400 - £600



515



**516 Roman - The Alton Jewel - Hampshire.** 62 mm tall; 68.30 grams. Circa 1st century AD. A unique and unparalleled pendant jewel, the backplate surmounted by a pediment inscribed TI CAESAR and with a broad laurel wreath suspension loop affixed at the top; the front section cast as a bust of the emperor, wearing a laurel wreath and with Julio-Claudian hairstyle; the lower section inset with a triangular red cornelian stone within a cell and thus likely to have originated in a provincial workshop as this method of setting is not usually associated with Rome; the titular form Ti Caesar appears frequently on the coins of Tiberius (14-37 AD) while the bust is particularly evocative of that depicted on the Alexandrian coin issues and the facial features are 'pharaonic' in style, especially the mouth; an Alexandrian origin is possible, perhaps as a donative offering piece.

DCMS Treasure Annual Report for 1998-1999; published December 2000, Roman Artefacts Section, p. 24, Item 43. Extremely fine.

*The Hampshire region was occupied by the Atrebates and Regni tribes in the Celtic period and the leader Cogidubnos later adopted the Roman prenames Tiberius Claudius, after being granted Roman citizenship and the title Legatus (normally reserved for those Romans of Senatorial rank). There are examples known of Roman jewels with inset flat tabled triangular stones (we have images on file and available).*

*Found by metal detector near Alton, Hampshire, 10th December 1999, in the context of the Alton Hoards of Celtic gold stater coins and other imported Roman gold jewellery (now on display in the British Museum), all discovered by Mr P. Beasley and Mr P. Murphy.*

*Reported to the British Museum and returned to the finders (disclaimed, as the BM were uncertain of the dating, under the Treasure Act). An X-Ray Fluorescence Test Certificate is also offered with this item, together with an extract of the Treasure Annual Report entry, other documentation and copies of press cuttings.*

£30,000 - £50,000



517



518



519

**517 Roman - Gold Ring with Intaglio Gemstone.** 25 mm, internal diameter 20.14 mm, 5.13 grams. Circa 2nd century AD. A fine intaglio gemstone ring, its band with entwined scrolled design and affixed to the oval bezel cell, the inset cabochon carnelian stone incise engraved with a depiction of a standing heron. Cf. Johns; cf. Scarisbrick; cf. Higgins. Fine.

£600 - £800

**519 Roman - Pair of Gold Earrings.** 2.06 and 2.07 grams. Circa 2nd century AD. A pair of gold drop earrings, each comprising a wire hoop with hook terminal fastening, an applied domed bezel having wire appliqué and a wire free-swinging drop with a small natural red stone (carnelian/garnet?) retained on the wire by a knot. Cf. Higgins, pl 54, B. Fine and attractive.

£250 - £350

**518 Roman - Lunette Filigree Pendant.** 28mm tall; 4.13 grams. Circa 2nd century AD. Superbly modelled and designed lunette pendant, its flat body decorated with applied filigree work, the borders with four rows of twisted and plain wire and the points of the lunette with small conical terminals with twisted wire collars; the centre displaying wire scrolls and beads; a small cast rosette affixed to each point and to the front of the banded suspension loop. Cf. Johns. Extremely fine.

£800 - £1,200



520



521

**520 Roman - Bronze Statuette - Zeus.** 130mm tall; 330 grams. Circa 2nd century AD. A solid cast bronze statuette of Zeus, superbly modelled; the laureate and bearded figure standing with one leg slightly bent, holding in his right hand a thunderbolt while his left hand is raised and pierced to accept a spear (lost in antiquity), with a cloak looped over his left shoulder and a belt around the waist; the musculature very well defined. Cf. BM Collections; cf. Guildhall Collections. Very fine, undamaged and with pleasing patina.

£4,000 - £6,000

*From an old English collection.*

*A dramatically posed and very well executed piece with considerable presence.*

**521 Roman - Bronze Lares Figurine.** 112 mm tall (including base). Circa 2nd century AD. A solid cast standing statuette of a female togate Lares figure with delicately moulded features, hair and fabric, standing on a cylindrical hollow cast base; the base, although contemporary, may be a replacement. Cf. Benet R11-0114. Very fine and undamaged.

£900 - £1,200

*Old English collection.*





522 **Roman - Bronze Winged Eros Figure.** 70mm. Circa 2nd century AD. A naked male winged figure in a recumbent seated posture with long flowing hair; the right arm upraised (once holding torch or arrow?); the figure and posture evocative of representations of Eros seen on ancient coins with well defined musculature and details. Generally fine with loss to lower left arm.

£800 - £1,200



523 **Roman - Bronze Figural Key.** 76mm long. Circa 2nd century AD. A bronze cast key with the handle modelled as a female helmeted bust (perhaps Minerva?), the five wards with hooked ends; complete with suspension loop. Fine, with slight loss to one ward.

£200 - £300

524 **Roman - Statuette of a Soldier with Female Head and Bust of Minerva.** Figurine 70mm tall. Circa 2nd-3rd century AD. A group of three bronze items: a small figurine of a kilted soldier, bearing a round shield; a knife handle in the form of a bust of Minerva; a small female head with headress. Cf. Benet. The figurine with some loss to upper part of shield. The figurine and head with custom-made stands.

£200 - £300



525 **Roman - Bronze Votive Bull.** 48mm tall. Circa 3rd century AD. A solid cast figure of a bull with horns, shoulder hump and dewlap; well modelled, standing on an integral rectangular base with corner feet. Very fine.  
£200 - £300  
*Old English collection.*



526 **Roman - Bronze Eagle with Wreath.** 58mm tall. Circa 3rd century AD. An eagle sitting on a perch, holding a laurel wreath in its beak; the perch set into a plinth on a stepped base with a fixing hole in each corner. Very fine.  
£250 - £350



527 **Roman - Bronze Votive Tigress.** 35mm tall. Circa 3rd century AD. Solid cast with stripes and details indicated by incised lines, with right paw on a globe; standing on an integral flat rectangular base. Very fine, with slight loss to tail and one corner of the base slightly distorted.  
£250 - £350  
*Old English collection.*



528 **Roman - Bronze Lioness Mount.** 65mm wide. Circa 2nd century AD. Hollow cast lioness mount, standing on a flat integral base, with caricature snarling features, supporting a human mask of a barbarian male wearing a Phrygian cap. Very fine with slight loss to the edges of the human face.  
£350 - £500  
*Old English collection.*



**529 Roman - Giallo Antico Marble - Statue of Herakles (Hercules).** 63 cm. Circa 2nd century AD, from North Africa. Herakles shown in his finely depicted lion-skin, the head of the lion-skin hanging over his left arm while he pulls it over his right shoulder and clutches the legs to his chest in his right hand; holding in his left hand a bowl once containing the apples of Hesperides and his club resting by his relaxed left leg; the torso and legs well-muscled, with well defined bare feet. Fine; head and apples (from bowl) missing and some localised chipping.

*Ex Bonhams Sale 11597, Lot 219 (from an old English collection). The back of the piece with a rectangular recessed slot, continuing down to the heels, suggesting that the statue was possibly an architectural fixture.*

£8,000 - £10,000





530 **Roman - Lead Coffin Plate.** 80cm by 46cm. Circa 3rd century AD. A substantial part of a relief ornamented lead coffin plate (the ends of the panel trimmed in modern times); the panel divided by ropework lines into diamonds and triangles with a row of small urns along the top border; each diamond containing an eight-spoked rope star and each triangle a dolphin and four cockle shells; all are traditional funerary symbols, associated with the cult of Dionysus, which promised its initiates an existence beyond the grave, or for the

repulsion of evil spirits and demons. Cf. BM Roman London, p. 66 (fig. 32) for similar examples. The lower edge ragged but the mouldings excellent and stable. Uncleaned.

£300 - £500

*From deceased estate.*

531 **Roman - Carved Marble - Eagle.** 165mm long. Circa 2nd century AD. A substantial carved eagle in marble, its head and plumage particularly well delineated and imposing. Fine, with slight loss to tail.

£300 - £500



531

532 **Roman - 2 Samian Ware Bowls.** 67 mm and 103 mm diameter. Circa 1st century - 2nd century AD. Two small Terra Sigillata bowls or cups with raised feet, with the maker's mark stamp to the smaller bowl internally BIRACICII (a potter Biragillus is recorded with a stamp BIRACCI at the Banassac production site for the period 69-117 AD); a maker's mark stamp to the larger bowl internally TAVRICI M (a potter Tauricus is recorded for this stamp at the Lezoux production site for the period 130-180 AD). Small bowl: cf Hofmann 1988: Banassac. DAF6: La Graufesenque. Large bowl: Oswald 1931: 100-160. Rim restored to smaller bowl, otherwise fine with some wear to foot. Larger bowl restored for about one third of the bowl with some wear internally at junction between sides and base.

£80 - £110

*Found 1980's near Godmanchester, UK.*

533 **Roman - Slipware Flagon.** 140mm tall. Circa 3rd century AD. A small flagon with handle, the upper body and neck with red slip. Fine with small chip to lip.

£60 - £90

534 **Roman - Greyware - Shallow Dish.** 170mm diameter. Circa 2nd century AD. A shallow greyware dish or bowl with a lightly incised internal ring pattern. Fine, with some pale surface deposits externally.

£90 - £120

*Originally from Syria (before 1920); ex USA collection.*



533



535



536



538

**535 Roman - 'Panther' Oil Lamp.** 110mm. Circa 1st century AD. A redware clay oil lamp with double volutes, the discus showing the relief figure of a female panther with a raised paw resting upon a tall vase. Bailey, Type A, Group I. Very fine.

£200 - £300

*With old label on base 'Bought Rome 1874'; ex Seaby, 1981, A339 (offered with an illustrated extract from SCMB). The image of the panther occurs on some Greek Imperial coins and has been linked to Dionysos.*

**536 Roman - 'Two Gladiators' Oil Lamp.** 90mm. Circa 4th century AD. A cast ceramic oil lamp with pierced handle and plain spout, the discus depicting two fighting gladiators. Cf. Bailey. Very fine.

£200 - £300

**537 Roman - Two Glazed Oil Lamps.** 70 mm diameter. Circa 4th century AD. Two moulded clay lamps glazed in pale olive-green and pale yellow-brown respectively. Very fine and undamaged with full glazes.

£50 - £80

*Old English collection.*

**538 Roman - Glass 'Carafe' Bottle.** 195mm tall. Circa 3rd century AD. A bottle of simple blown form with flared lip and a single applied spiral bead to the neck, the base dimpled and showing a pontil scar; the glass with a hint of blue-green coloration. Very fine and undamaged. Slight efflorescence to the external body surface.

£300 - £400

*Ex old English collection; believed found in the UK, circa 1930.*



540

**539 Roman - Bronze Steelyard Balance.** 300 mm. Circa 2nd century AD. A balance with main shaft of square section, twisted 45 degrees in the area of the fixed hooks, with rounded terminals. Three fixed loops at the balance points, each with a swivel hook for suspension and each affixed to a different face of the shaft. Also with a pair of suspended load hooks, linked to a ring that slides freely along the shaft. Attractive. Cf Museum of London; cf Royal Collection (for a later reproduction of the same type). Very fine and complete.

£300 - £500



**540 Roman - Miniature Bronze Steelyard Balance.** Beam 83 mm long. Circa 2nd century AD. The balance arm with notches to mark the weight divisions and having three integral suspension loops; the end loop fitted with a wire hoop suspender and the median loop fitted with a curved hook to receive the load to be weighed. Fine.

£90 - £120

*The small size of this balance suggest use for weighing light or valuable items; perhaps spices or similar materials.*



542

**542 Roman - Two Silver Phallic Pendants.** 35mm and 27mm; 9.75 and 4.22 grams. Circa 2nd-3rd century AD. Two silver phallic pendants, one double-ended; both well modelled. Fine.

£150 - £200



543

**543 Roman - Military Bronze Phallic Pendant.** 27.62 grams; 40 mm tall overall. Circa 2nd century AD. A pendant of typical military style, showing well-modelled scrotum, testicles and penis, with ropework upper border and suspension loop. Cf Benet, No. R09-0418. Very fine, with pleasing patina.

£50 - £70

*Old English collection.*

**544 Roman/Greek - Five Bronze Arrowheads.** Largest 35mm long. Circa 2nd century AD. A group of five bronze Roman and Greek socketted arrowheads in a variety of styles. Generally fine.

£20 - £30



**545 Roman - Large Bronze Brooch.** 110mm long at pin. Circa 1st century AD. A large and heavy angular bow brooch, with pin. Fine.

£70 - £90

545





546

**546 Roman - Large Crossbow Brooch.** 108mm long. Circa 3rd century AD. A large example of the type, with plain bow of trapezoidal section, the foot embellished with four pairs of scroll ornaments; a rare item. Cf. Hattatt. Fine, with slight loss to catchplate. An old repaired break at base of bow.

£200 - £300

**547 Roman - Silver Crossbow Brooch and Bronze Figural Mount.** Brooch 60mm, 23 grams. Mount 42mm, 35 grams. Circa 2nd century AD. A silver crossbow brooch with conical terminals and engraved catchplate front; WITH: a bronze mount in the form of a draped female head with well modelled facial details. Fine. The brooch lacking the pin but scarce.

£200 - £300



547

**548 Roman - Three Zoomorphic and Two Plate Brooches.** From 22 to 32mm Circa 2nd century AD. A group of five zoomorphic and other brooches: a finely modelled 'in the round' hare with silvered surfaces; a flat hare brooch enamelled in orange/red and yellow; a flat fish brooch enamelled in red and blue; a circular disc brooch with red and dark blue enamelling; a raised boss disc brooch. Cf. Hattatt. Generally fine although four lacking their pins.

£150 - £200

**549 Roman - Four Bronze Bow Brooches.** Largest 70mm tall. Circa 2nd - 3rd century AD. Group of four bow brooches, all with pins, one with a double bow (a rare form). Cf. Hattatt. Fine.

£40 - £60



548

**550 Roman - Six Bow Brooches.** From 33 to 54mm Circa 2nd - 3rd century AD. A group of six bow brooches of various forms; the example at top centre is a scarce, silver trumpet type. Cf Hattatt. Generally fine; the silver brooch lacking a pin but pleasant and scarce.

£100 - £180

**551 Roman - Five Brooches and 'Shield' Belt Stud.** Brooches 75 to 60mm; stud 30mm. Circa 1st century AD. Three fine bronze brooches complete with pins: a bronze 'leech' brooch (lacking pin); a rare and interesting bronze angular brooch in the form of a heavily moulded and bent human arm (lacking only the pin); a bronze military belt stud in the form of a scutum (legionary shield). Generally fine.

£50 - £70



550



553

**552 Roman - Six Bow Brooches with pins.** Crossbow 70mm. Circa 2nd - 3rd century AD. A group of six bronze bow brooches in a variety of styles, including a crossbow type, all complete with pins. Cf. Hattatt. Fine-very fine.

£90 - £150

**553 Roman - Four Bronze Bow Brooches.** Largest 80mm. Circa 1st century BC - 1st century AD. Group of four bow brooches of similar style. Each with the catchplate terminating in a wire wound around the centre of the bow. Scarce. Fine-very fine and complete.

£60 - £90

*An interesting form of brooch.*

**554 Roman - Nine Bronze Needles and Three Implements.** Implements 210 and 175mm long. Circa 2nd century AD. A group of nine eyed bronze needles, together with a bodkin and two other hooked (possibly surgical?) implements. Generally good to fine.

£50 - £70



554



555



556

**555 Byzantine - Gold and Turquoise Pendant Cross.** 26mm; 3.06 grams. Circa 6th century AD. Gold pendant cross with five cells to the front, four inset with rectangular turquoise stones and the centre with a circular pink stone (possibly later), the arms of the cross and lower limb each having a small loop below; reverse plain. Very fine.

£900 - £1,500

**556 Byzantine - Gold Pendant Cross.** 30 x 22mm. Circa 6th century AD. A simple and unadorned hollow pendant cross, each limb formed from a tapered cylinder, with flat end closures, the centre reinforced with a small circle of gold each side and the plain suspension loop neatly affixed. Very fine.

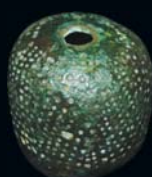
£600 - £1,000



557

**557 Byzantine - Bronze Censer.** Bowl 50mm tall; overall 360mm. Circa 7th century AD. A bronze suspended censer with long-link chains and attachment. Fine.

£90 - £120

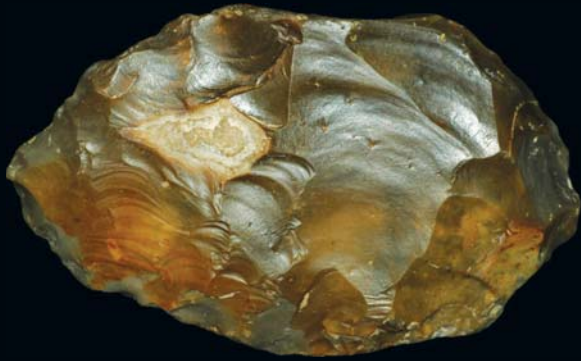


558

**558 Byzantine - Bronze Thimble.** 25mm tall, 29 grams. Circa 8th century AD. A heavy bronze thimble, with central perforation on the upper surface. Very fine.

£30 - £50





**559 British Palaeolithic - Flint Ovate Hand Axe.** 120 mm; 305 grams. Circa 45,000 BCE. Middle Palaeolithic. Ovate form of roughly triangular cross-section with one side almost flat; the original flint pale grey in colour with orange-brown patination typical of river gravels; knapping of good quality. Cf Evans, fig. 440 (etc); cf McAlpine, 1.10 (etc). Fine with some small modern(?) chips to edges.

£80 - £100

*Unprovenanced but believed to be from France; possibly the Somme region.*



**560 British Paleolithic - Flint Hand Axe.** 105mm long. Circa 350,000 BCE. A finely knapped, bifacial triangular handaxe with pale yellowish patination. Fine.

£90 - £120

*Found Suffolk, circa 1960.*

**561 European Palaeolithic - Eight Small Flint Axes/Choppers.** From 66 to 78mm. Circa 45,000 - 10,000 BCE. Upper Palaeolithic. A group of eight small hand axes / choppers. Fine.

£40 - £60

*From Europe.*



**562 European Mesolithic - Flint Axe.** 140mm long. Circa 8,000 BC. Finely knapped axe with triangular section, rounded cutting edge; tapering to a point at the butt. Very fine.

£70 - £90

*Believed to be from southern Europe.*



**563 British Neolithic - Polished Flint Axe.** 120mm. Circa 4,500 BCE. An axe in a pale, speckled flint with light patination; some polishing to surfaces, long edges and cutting edge. Fine.

£60 - £90

*An old English find.*



**564 British Neolithic - Flint Axe - Thames Valley.** 165mm long. Circa 4,500 BCE. A finely knapped flint axe, with yellow-brown patina; the convex cutting edge tapering evenly to a rounded butt. Cf. Evans. Fine

£90 - £120

*Marked in ink 'R. THAMES ENG IF CE14' and 'THAMES IFCE14'. Said to have been found in the Thames, to the west of London.*



**565 British Neolithic - Bifacial Flint Knife.** 115 mm. Circa 3,000 BC. A rare, finely knapped bifacial flint knife, tapering to a point, with slightly rounded butt. Cf. Evans. Fine.

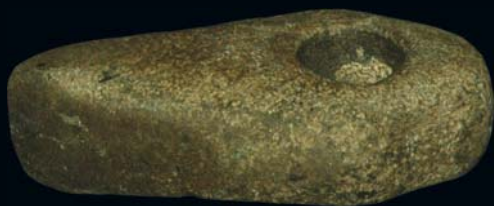
£100 - £200

*Found near Elham, Kent, 1980s.*

**566 British Neolithic - Seven Convex Flint Scrapers.** 50 to 70mm. Circa 5,000 BCE. A group of seven convex scrapers in high quality flint; good quality knapping with delicate retouching to working edges. Fine.

£20 - £40

*Surface finds from East Anglia.*



**567 Danish Neolithic - 'Boat-Shaped' Stone Axe Hammer.** 115mm. Circa 2,800-2,400 BC. A Danish 'Single Grave Culture' stone axe hammer of typical 'boat' shape form, with cylinder perforation and fine polishing to the sides towards the cutting edge. Cf Evans Fig. 135 (etc). Very fine and undamaged. Slight evidence of usage wear to the working surface of the hammer end.

£100 - £180

*Ex old English collection.*



**570 European Neolithic - Polished Flint Axe.** 170mm. Circa 4,500 BCE. A substantial tool in a pale grey chert, its surfaces, long edges, butt and cutting edge all polished. Fine.

£60 - £90

*Ex old Continental collection.*



**571 European Neolithic - Stone Axe.** 185mm long. Circa 3,000 BC. A pecked and polished black stone (basalt?) axe with convex cutting edge. Fine.

£60 - £80

*Believed to be from southern Europe.*



**568 Scandinavian Neolithic - Two Polished Axes.** 130mm, 115mm. Circa 4,000 BCE. Two axes of typical knapped form, with polishing to square cutting edges. Generally fine.

£60 - £80



**572 British Bronze Age - Palstave Axe.** 150mm long. Circa 2,000 BC. A cast palstave axe of typical form, with wide blade and side loop. Cf. Evans; cf. NMWBAC fig. 22. Fine and stable, with some minor loss to edges.

£200 - £300



**569 European Neolithic - Two Ground Stone Axes.** 225mm, 200mm. Circa 5,000 BCE. Two double-ended ground stone axes with square sides in fine textured stone. Generally fine, with minor chipping to cutting edges.

£60 - £80



**573 British Bronze Age - Socketted and Looped Axe.** 90mm. Circa 1,200-800 BC. A Late Bronze Age socketted axe with side loop and convex cutting edge; evidence of usage wear at edge and deliberate distortion to rim of socket. Cf. Evans. Fine.

£90 - £120





575

576

577

578

**574 British Bronze Age - Socketted Gouge and Axe.** Gouge 65mm long; axe 90mm long. Circa 1,200-800 BC. A Late Bronze Age small socketted gouge with traces of casting seams to sides; WITH: a damaged socketted axe. The gouge fine; the axe damaged at the socket and lacking any loop (uncleaned).

£90 - £120

**575 British Bronze Age - Socketted Spearhead.** 120mm long. Circa 1,200-900 BC. A typical Late Bronze Age example of a spear with socket, its leaf-shaped blade plain; the socket with two perforations for a fixing rivet. Cf. Evans; cf. NMWBAC, fig. 33. Fine, with very small loss to tip. With a custom-made perspex mount and cover.

£70 - £90

**576 British Bronze Age - Socketted Spearhead.** 270mm long. Circa 1,200-800 BC. A rare Late Bronze Age finely cast spearhead with socket; the straight-edged blade with formed runnels and the

socket with perforations for a fixing rivet. Cf. Evans; cf. NMWBAC fig 33. Fine. With a custom-made black stand.

£90 - £120

*An old find from Western England.*

**577 British Bronze Age - Socketted Spearhead.** 210mm. Circa 1,200-900 BC. Late Bronze Age. A substantial socketted spearhead. The leaf-shaped blade tapering to a fine point with stepped edges. The socket with two piercings to receive a fixing rivet. Cf. Evans; cf. NMWBAC fig. 34. Very fine.

£200 - £250

**578 European Bronze Age - Hallstatt Socketted Spearhead.** 280mm long. Circa 1,500 BC. A large spearhead of typical Hallstatt Culture form, the socket with two perforations to receive a fixing rivet. Cf. Evans. Tip of blade restored, otherwise fine.

£200 - £300

579



**579 Bronze Age - British Rapier and Two Luristan Arrowheads.** From 96 to 228mm. Circa 1,000 BC. British rapier blade with two Luristan tanged arrowheads. cf. Evans; cf. Khorasani. Fine.

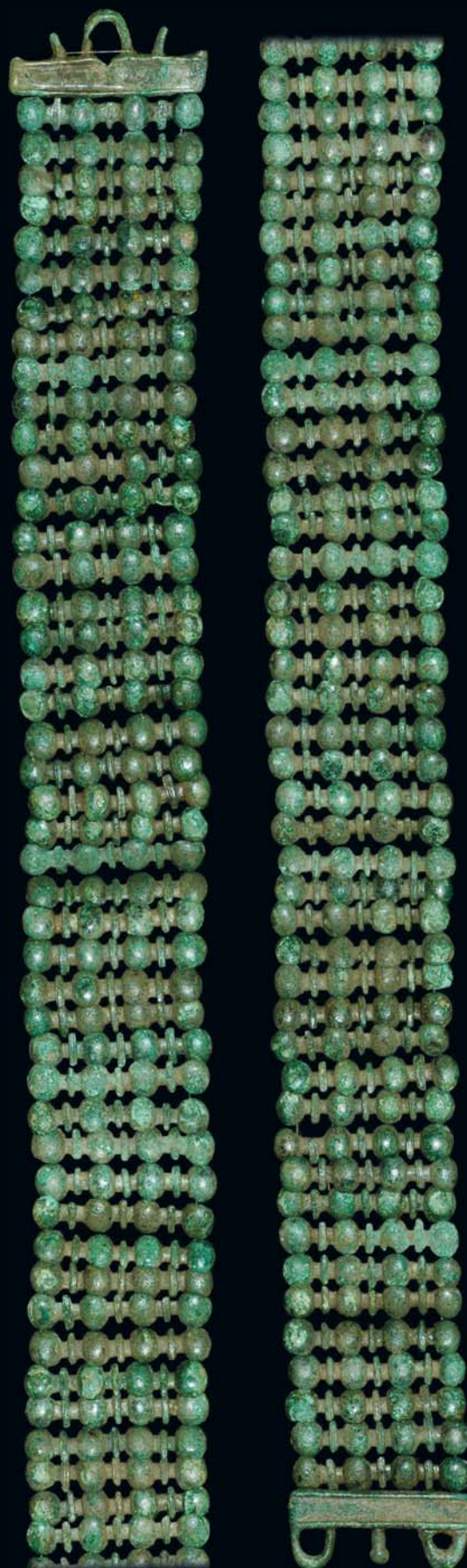
£70 - £90

**580 Hungarian Bronze Age - Belt of Ninety Links.** 99cm. Circa 1,200-900 BC. An important and very rare Bronze Age Hungarian bronze belt composed of ninety cast ornamental bar links plus two cast end fittings with incised ornament; originally linked by four cords threaded through the holes on the reverse of each bar. Cf. Rossini, 17th November 2009, lot 7 (for a very similar but shorter example). Very fine. Strung on nylon line for mounting or display.

£800 - £1,200

*Ex Continental collection.*

580





**581 Irish Celtic - Ultimate La Tène Style - Enamelled Double Roundel.** 56mm diameter; 35.57 grams (combined weight). Circa 7th century AD. A superb and excessively rare pair of Irish Celtic enamelled flat toroid roundels in the 'Ultimate La Tène' style together with a plain separating disc; each roundel ornamented on the exposed face with a similar (but not identical) series of eight and six alternating triskeles and trumpet-spirals in a triple spiral, eight/six spot roundel form respectively, executed with wondrous accuracy; the triskeles, spirals and reversing curves reserved against a rich, red enamel ground; the plain border rim of each disc pierced with six small equidistant fixing holes, corresponding with each other and with those on the central plain disc; the reverse of each outer roundel and both sides of the separating disc marked at one fixing hole position to facilitate symmetrical assembly of the whole unit; the central apertures of the outer roundels of different sizes (15mm to one and 21mm to the other), with the central plain separating disc unperforated; the reverse of each roundel also showing the three and four respectively compass perforations from which the designs were laid out.

This pair of discs has strong affinity with the Donore Discs, found Ireland (although at 131mm, these are larger and not enamelled) and especially in that the designs for each disc, although obviously a pair, do not match - Muller, p. 264; also cf. Meehan (for many examples of spiral patterns from Celtic art of all eras); cf Ryan; cf. Coffey. Very fine, with much of the enamel surviving; some minor distortions. Offered with XRF Test Certificate for all three parts.

£17,500 - £22,500

*Found Norfolk (recorded at Norwich Castle Museum), 2007.*

*As with the Donore Discs, the exact purpose of this item remains uncertain. It is clear that the three elements were assembled together and united by small pins or stitching through the small perimeter piercings. The supposition, in view of the sheer quality of the roundels, must be that this assembly would have in turn been affixed to an object of special importance. The assembly is quite delicate and the central separating disc suggests it being attached to fabric, such as a clerical stole, for example. The design also has affinities with the Tara Brooch and the Book of Lindisfarne (c. 710 AD). Lindisfarne Abbey was founded in 635 AD.*





582

**582 Celtic Iron Age - Enamelled Cheek Piece Toggle.** 102mm; 65 grams. Circa 1st century BC. An extremely rare cast bridle cheek piece toggle of unusually large size with flared terminals, ornamented with a rectangle of twelve chequered enamelled cells, the panel tailing each end with a further six triangular cells; the arms with lines of engraved chevrons and the reverse with an engraved panel, divided diagonally in quarters. MacGregor, 45 & p. 38; cf Piggott; cf Mills, C49; Benet, No. I15.0202; BM, 'Later Prehistoric Antiquities', 1953, pl. XIII(4); Richborough V (OUP 1968), plate XXXIX, no. 144 (p. 97). Very fine, with much enamel in situ. One of the finest known examples.

£800 - £1,200

*There has been debate about the exact purpose of these enamelled 'toggle' pieces. Long thought of as bridle 'cheek pieces', modern research, from their occurrence in chariot burials, suggests that their use may have been with the chariots themselves, rather than being specifically part of the horse harness set.*

**583 Romano-Celtic - Bronze Chariot Axle Cap.** 114mm tall; 70mm long. Circa 1st century AD. A substantial and attractive Romano-Celtic chariot axle cap, its terminal cast as a characterful female Celtic bust wearing a Phrygian cap; the breasts outlined in 'ropework' pattern; a necklace with pendant (once containing a small 'stone'?) around the neck and the hair in waves to the sides of the face; a cylindrical socket behind to receive an axle stub of about 40mm diameter, with two fixing holes and a pair of suspension loops below. Cf Bonhams sale number 15941, 15th October 2008, lot 243 for a very similar piece (described therein as a protome). Complete and very fine. Stable green patination with an old scuff to the left side hair and slightly to left cheek. A modern piece of wire has been inserted through the lower suspension loops to allow the piece to stand for display.

£600 - £800

*Ex Chris Rudd FPL, 40, 1999 (£950).*



582



**584 Celtic Iron Age - Stone Tympanum and Pediment.** 70cm wide. Circa 1st century BC - 1st century AD. A Celtic shrine tympanum and pediment fragment, the tympanum featuring four human busts facing outward: a tall male, a shorter female to his right, and two smaller figures to his left all facing the viewer; the eyes executed in the characteristic Celtic almond-shape, the nose flat, the mouth scaphoid, the hair stranded, combed forward for the male and centre-parted for the female; some details of the clothing visible on the far right figure. The iconography of the adult pair with smaller figures suggests a family group of parents and children; there are however parallels for a pair of deities depicted 'full-size' with diminutive attendants e.g. the tableau from Aquae Sulis (Bath, Somerset) depicting a horned god, a goddess and three smaller hooded companions.

The execution is in the pre-Roman figural style, apparently uninfluenced by the classicizing tendencies of later Gallo-Roman art - compare e.g. the Sucellos/Nantosuelta pillar from Sarrebourg (Metz, Germany), with its naturalistic realization of the human form versus the Gallic style seen at Roquepertuse, Euffigneix and Entremont. Ross, A. 'Pagan Celtic Britain', London, 1974; Megaw, R. and V. 'Celtic Art: From its Beginnings to the Book of Kells', London, 1989. Finely carved in limestone, some damage to lower edge, substantially complete.

£2,500 - £3,500

*Believed found in Germany in the 19th century. Ex old English collection.*



585

**585 British Celtic Iron Age - Chariot Terret.** 85mm tall. Circa 1st century BC. A large, solid-cast chariot terret, its main bow ornamented with a knob, with three pairs of projecting leaves and rising from a pair of leaves with a ropework collar below. The basal skirt also of foliage form with a knob to each lower point and an integral lower loop. A rare terret form. MacGregor, pages 38-48; Benet, No. I15-0113. Very fine and undamaged with variable green patination.

£150 - £250

*Found North Yorkshire in the 1990's.*



586

a warrior on horseback with his arm raised to brandish a spear or sword (since lost); the horse and rider cast separately with detailing evident. Cf. Benet. Fine, with some loss to legs (possibly deliberate?). Mounted on custom-made block and pin for display.

£150 - £250

**586 British Celtic - Bronze 'Horse and Rider' Figurine.** 50mm tall (excluding stand). Circa 1st century BC. A rare figurine of

Found on the tidal foreshore near Whitstable, Kent, 1987. Recorded with Canterbury Museum at the time of finding.

**587 British Celtic Iron Age - Coarseware Vessel.** 90mm tall; 115mm diameter (maximum). Circa 1st century BC. Simple wheel-thrown coarseware domestic pottery vessel. Very fine and undamaged.

£80 - £120



587





**588 Hiberno-Saxon - Bronze House Shrine Cover.** 105 mm overall, 54 grams. Circa 8th century AD. A fine example of a hollow cast copper-alloy house shrine cover in the form of a decorated roof-ridge similar to examples in the National Museum of Ireland, Dublin; the central feature a quadrilateral projection with recessed gilt panels bearing double-contour interlace decoration on the lateral surfaces and herringbone detailing on the ends, below which on the sides quadrangular interlace panels with prominent frames; the body consisting of a hollow, flat-topped bar with lightly incised panel decoration, the bar terminating with involuted, opposed animal heads resting on the upper face, with finely moulded clenched teeth and jaws; below each terminal on both faces a subtriangular gilded panel of geometric interlace, the rising ends decorated with double rows of herringbone texturing and the upper face pierced in two places to accept an attachment; beneath are two tongue-shaped projections pierced to attach the piece to the top of the shrine.

Webster & Backhouse, 1991, pp.175-9; Wallace & O Floinn, 2002, pp.191 & 205-6; also cf. the Monymusk reliquary casket, Zaczek, pp. 105-6 (with excellent illustration showing the method of attaching this part to the casket) Extremely fine with wear to the terminals on one face due to its long use as an object of religious veneration.

£30,000 - £40,000

*From the estate of a deceased collector.*

*Stylistically, the interlace decoration is similar to the 8th century chalice from the Ardagh hoard and the Gandersheim casket. The Monymusk reliquary, once containing a relic of St Columba, was carried into battle at Bannockburn in 1314, as a talisman.*



**589 Anglo-Saxon - Disc-on-Bow Square-Headed Brooch.** 145mm; 115 grams. 5th-6th century AD. An extremely rare example of an Anglo-Saxon square-headed brooch complete with the disc on the apex of the bow, comprising a square headplate, bow and openwork footplate; the headplate rectangular with three zones of decoration: the outer zone features flat panels with Y-shaped punched decoration in two series and rectangular panels in the corners, covered with silver foil; the inner panel comprising a plain border enclosing a beaded line within which is a series of square animal-limb ornaments with plain panels at the upper corners; the central zone comprising a three-strand vertical bar flanked by two Style I profile faces, above which are set two square cloisonné garnets; the bowl formed as a shallow dish with no surface decoration and obscured by the disc feature (about 2mm thick), cast with two broad concentric incised lines with traces of punched beading and an eccentrically placed silver foil disc on a copper-alloy plate, forming the head of the securing rivet; from the lower sides of the bow two openwork sections forming the arched necks of zoomorphs whose

rounded heads and everted lips joining the footplate; the eyes marked as punched roundels, and punched dot details on raised upper borders on the necks; below the junction with the bow, the lozengiform footplate comprising a raised central rib with pyramidal detail on the junction with the bow, flanked by four curved zones of the same square animal-limb ornament as on the headplate extending to lateral silver-foil discs; between the central rib and the discs two triangular cloisonné garnets; the brooch terminating in a large silver foil disc, above which the animal-limb ornaments ending in u-shaped jaws; the pin-lugs and catchplate present on the reverse, but incomplete; the heavy gilding and the silver plates remaining substantially complete. Cf. MacGregor, A. & Bolick, E. A Summary Catalogue of the Anglo-Saxon Collections (Non-Ferrous Metals) BAR British Series 230, 1993, p.118 items 13.13, 13.14. Good very fine condition, professionally cleaned and conserved.

£6,000 - £8,000



**590 Merovingian-Frankish - Silver Gilt Square-Headed Brooch with Garnets.** 40mm; 14.93 grams. Circa 5th-6th century AD. A fine example of a Merovingian-Frankish cast silver square-headed brooch, its quadrangular headplate featuring a thick pelleted border on the three outer edges, with a panel of incised zoomorphic decoration in an evolved version of Salin's Style I; two scaphoid and two circular cloisonné garnets placed symmetrically above the bow, featuring one medial and two lateral heavy cast ribs with billeted panels between; the setting for a large circular cabochon garnet placed at the apex of the bow, the stone lost in antiquity; the brooch fractured at the junction of the bow with the footplate; with pierced hinge lugs in situ on the reverse. Menghin, W. *The Merovingian Period - Europe Without Borders*, Berlin, 2007. Fine, lacking the catchplate segment and one stone.

£300 - £400

*Found near Canterbury, Kent, circa 1988 (Treasure Act Ref 2004 T186a and returned to finder).*



**591 British Anglo-Saxon - Button Brooch.** 16.5 mm; 2.70 grams. Circa 5th-6th century AD. A Saxon copper-alloy, gilded button brooch; an unusual example of Avent and Evison's Class L, with a Style I zoomorph in place of the normal mask or helmet. Avent & Evison, 1982. Fine with most of the gilding remaining, traces of the iron pin at the spring-lug and slight loss to the catchplate.

£100 - £150

*Found Isle of Thanet, Kent, 2003.*



**592 Merovingian - Pair of Bronze Brooches.** 63 mm; 6.49 and 6.20 grams. Circa 5th-6th century AD. A nicely detailed matched pair of Frankish copper-alloy bow brooches; the square head bearing a double border and billeted infill, with radiating lobed knobs; the shallow bow bearing a thickened, pelleted median rib and billeted decoration; the convex footplate bordered by pelleted bands enclosing a panel of billeting; the finial in the form of a zoomorphic head formed from a pelleted subtriangular feature with convex billeted panels on each side. Smith, 1923, plate XIV no.11. Generally fine with one brooch having a break at the centre repaired.

£50 - £70

*Ex English collection.*



**593 British Anglo-Saxon - Zoomorphic Openwork Strap End.** 70 mm; 11.29 grams. Circa 8th-9th century AD. A fine, large example of a Middle Saxon openwork zoomorphic strap end cast in copper-alloy, the split and scrolled upper edge pierced to accept two attachment rivets, of which one is still in place and the plate decorated in openwork running scrolls within a frame with segmental decoration; the terminal an animal head in plan with volute ears, bulging eyes and square snout. Webster & Backhouse, 1991, p. 85, fig. 66m. Fine with full patination.

£100 - £150



**594 British Anglo-Scandinavian - Zoomorphic Strap End.** 46mm; 5.90 grams. Circa 9th-10th century AD. A narrow copper-alloy strap end of a type influenced by Scandinavian design, the split end plain with a single piercing, and with the rivet still in place; the plate developing into an animal head in plan in the form of a serpent with lentoid eyes and powerful jaws gripping a dragon-head executed in profile with its prominent lower jaw, fangs and snout forming the terminal of the piece; the profile head executed in Ringerike Style and pierced in two places; the whole piece modelled in the round (with detail on the reverse). Cf. Smith, 1923, fig. 131(4). Fine with full patination.

£80 - £100

595



**595 English Medieval - Gold Inscribed Ring with Sapphire.** 21mm diameter; 2.25 grams. Circa 13th century AD. A rare gold finger ring with triangular section hoop, its two upper faces divided into four sections by moulded saltire crosses; each section of the outer two faces alternately engraved with letters and symbols (?) or with incised cabling; the lettering obscure, reading S E [?] E? [?] W? A? I N T A; such enigmatic inscriptions were often of magical significance; the bezel in the form of a triangular cell containing a natural sapphire stone. Cf. Oman, plate 14, 18, etc. Very fine.

£1,500 - £2,500

*Found Lincolnshire, 2009. Disclaimed under Treasure Act, 1997 (reference 2009T17) and offered here with a copy of the confirmatory British Museum letter (dated 4th June 2009) and their report.*

596



**596 English 17th Century - Gold Posy Ring.** 18.91 mm x 3.05 mm; 1.44 grams; internal diameter 18.78 mm. Circa 17th century AD. A finger ring inscribed internally in letters 'Vertue is the chefest ornament'; the band engraved externally with alternating rosettes and 'z' ornaments. The 's' of 'chefest' is the 'long' variant, similar in appearance to the script 'f'. This particular motto not listed in Evans or Humphreys (although Virtue is a common element in posy ring verses). Very fine, with some very slight distortion to the band. Eminently wearable and easily refinished.

£400 - £500

597



**597 English 17th Century - Gold Posy Ring.** 22.30 mm x 4.34 mm; 5.59 grams; internal diameter 19 mm. Circa 17th century AD. A finger ring inscribed internally in script 'God a lone made us to One' with initials in capitals (apparently added later) 'W M E' indicating the surname initial 'M', the husband's initial 'W' and the wife's initial 'E' set in a triangle, in the style frequently seen on token farthings of 17th century date; the maker's mark 'NL' within a rectangular cartouche perhaps for a London silversmith recorded with this mark for the year 1692-3. For the motto - Evans, p. 39; for the maker - Jackson, 1921 edition, p. 148. Very fine, with some slight distortion to the band and a few minor nicks and scratches to the edges. Eminently wearable and easily refinished.

£400 - £500

*Ex English collection; bought at Cumberland Coin Fair, 1980s.*

598



**598 English 17th Century - Inscribed Gold Memorial Ring.** 20mm diameter external, 18.22 internal. Circa 17th century AD. An inscribed memorial ring, its band engraved with a human skull on the outside and internally engraved in script lettering 'Remember to Dye'; with maker's mark 'GB' in rectangle. Very fine.

£400 - £500

*Found in the Thames, London, 2007 (PAS reference LON-DC6707 and Treasure Act reference 2007 T380 - disclaimed as not possible to date prior to 1708 under the Treasure requirements. Offered with PAS entry printout and contained in BM issue plastic box, with foam insert and labels.*

599



**599 English 17th Century - Gold Signet Ring - Bull and Heart.** 19.07 grams. Circa 17th century AD. A gold signet ring with slightly oval bezel, the reverse engraved with the initials 'I A' and depicting a prancing bull with a small heart above its rump; no maker's marks; sold with a green leather-covered ring box. Very fine.

£600 - £900



**600 English Medieval - Silver Gilt Armorial Seal Matrix - Sir Richard Wortley.** 3.54 grams; 19.5mm tall. Circa 16th century AD. A small hexagonal-shank 'chessman'-style personal seal matrix with circular suspension loop and knob with double collar; the oval face of the seal showing an armorial shield within a beaded border; the arms diagonally halved bearing three bezants and with three martlets in each half (heraldically blazoned as 'a bend three bezants between six martlets') being the arms of the Wortley family of Wortley Hall in South Yorkshire; probably the personal seal of Sir Richard Wortley (d. 1603). WITH: a modern coloured postcard depicting the Wortley family arms. For style of engraving and dating, cf Oman, 'V & A Catalogue of Rings', No. 489, etc. & plate XXI; for Whortley Hall, cf NMR: Monument No. 619248; for the arms, cf yorkshirehistory.com/Gallery/W. Very fine with the gilding almost fully intact. £200 - £300

*Ex English collection. Wortley Hall was the ancestral home of the Earls of Wharnccliffe, the Lords of the Manor of Wortley. The earliest record is for Alnus de Wortley, mentioned in the Pipe Rolls for 1165. Sir Thomas Wortley, born 1440, lived in the manor. His grandson Sir Richard Wortley rebuilt Wortley Hall in 1586 and died 1603. During the English civil war Sir Francis Wortley commanded a loyalist garrison at nearby Tankersley, and led the battle on Tankersley moor where he was captured by the Roundheads and taken to the Tower of London. Wortley Hall fell into decay until the mid 18th century. When Edward Wortley commissioned the rebuilding of the hall. In 1800, James Archibald Stuart Wortley and his wife Caroline Creighton should have taken up residence, but were unable to do so because for some reason the architect had omitted to include a staircase. The landscaping of the current grounds is attributed to Lady Caroline.*

**601 English 17th Century - Silver Gilt St Christopher Pendant.** 41mm tall; 11.63 grams. Circa late 16th-early 17th century AD. Cast and beautifully modelled fully in the round figure of St Christopher with long staff carrying Christ across the water, fitted with a loop on the reverse. Rare. Extremely fine with almost full gilding. £600 - £800

*From an old English collection.*

**602 English Medieval - Gilt Engraved Reliquary Cross.** 22mm. Circa 15th century AD. A rare, finely crafted pewter reliquary cross pendant with deckled edges and suspension loop, the front engraved with a scene of the Madonna with Child, delicately executed and gilded; the reverse with a cruciform cell to receive a piece of the 'True Cross'. Fine. £100 - £150

*Found in the River Thames silts, London. Recorded at the Museum of London.*

**603 English Medieval - Silver Gilt Finger Ring.** Internally 19mm; 7.82 grams. Circa 14th century AD. A heavy, silver-gilt finger ring with D-section hoop, its outer surfaces with incised and punched diamond pattern. Fine, with considerable gilding remaining. £80 - £120

**604 English Medieval - Silver Gilt Finger Ring.** Internally 18.70mm; 5.61 grams. Circa 14th century AD. A heavy silver gilt finger ring with D-section hoop, its outer surfaces with incised zigzag pattern. Fine, with some gilding remaining. £80 - £120

*From an old English collection.*

**605 English 17th Century - Two Silver Pendant Seals and Thimble.** Height 24.25, 15.62 and 21.7mm. Circa mid-17th century AD. Two silver pendant 'chessman' seals, the first with rectangular section shank and circular loop, the circular face intaglio engraved with a standing skeleton holding a sand-timer and arrow, with foliage to sides; the second similar with the oval face intaglio engraved with a horse and rider. WITH: a silver thimble with a frieze of fleurs around the base and two cherubs supporting a pair of hearts, each hand engraved with the letter 'M'; maker's mark 'BG' (possibly Benjamin Gurdon of London?). Both seals and thimble fine with slight abrasions only, the second seal with minor distortion to the loop. £90 - £120

600



601



602



603



604



605





**606 Norman - Four-Plate Rivetted Spangenhelm Helmet.** 210mm high, 175mm diameter; 1.71kg. Circa 11th century AD. An extremely rare iron helmet fabricated from four triangular iron plates skillfully made to accommodate the curvature of the human head and with a slight point at the apex; contoured so that the front and back plates overlap the side-plates by 1-2cm with iron rivets passing through this overlap to secure them in position; the rivets worked flat into the surface of the helmet, and almost invisible from the outside but detectable on the inner surface; the inverted lower rim furnished with an additional series of rivets, probably to accommodate a lining; two empty rivet-holes at the base of the side-plates, where the cheek-plates were originally attached; the plate-junction at the apex left slightly open, allowing a plume or horsehair streamer to be inserted or a covering plate to be attached. Helmets of this general profile and with some form of conical crest are a long-lived military fashion in the Black Sea region and appear in designs on the bone facing of a Khazar saddle of 7th-8th century date from the Shilovski gravefield (Samara region); a similar helmet (of presumed 5th century AD date)

is housed in the St. Petersburg Museum (inventory reference PA72), previously in the MVF Berlin until 1945 under inventory ref.III d 1789i. The rivetted-plate construction is known across Europe from the Migration Period through to the 12th century: it is this form which appears on the heads of English and Norman warriors in the Bayeux tapestry. Curtis, H. M., 2,500 Years of European Helmets, North Hollywood, 1978; Denny, N. & Filmer-Sankey, J., The Bayeux Tapestry, London, 1966; Kirpicnikow, A. N., Russische Helme aus dem Frühen Mittelalter, Waffen- und Kostümkunde, 3rd Series, Vol. 15, pt. 2, 1973; Menghin, W. The Merovingian Period - Europe Without Borders, Berlin, 2007, p.326-7 item I.34.4. Professionally cleaned and stabilized and in very fine condition, including a custom made display stand.

£7,000 - £9,000

*Ex an old private collection.*

*A full report from I. Eaves, Arms and Armour Consultant, and an XRF ancient metal test certificate from Oxford X-ray Fluorescence Ltd accompanies the piece.*





607

**607 English Medieval - Iron Knife with Bone Handle.** 260mm long. Circa 15th century AD. A rare and well preserved iron knife with bone handle scales, its straight-backed blade of narrow, tapering form and the shaped bone scales engraved with ring-and-dot motifs. Cf. London Museum Medieval Catalogue. Generally fine and stable, with slight loss to the butt end of one scale.

£100 - £150

Edmund, Earls of Cornwall and Poitou (lion rampant). London Museum, pages 171-174; Mills number NM.215. Very fine with pleasing colour.

£600 - £700

*Found Chelveston-cum-Caldecott, Northamptonshire in 2009 (PAS record NARC-A39A55).*

*The date for this weight of middle to late 13th century is established from the arms shown as being after 1257 when Richard, brother of Henry III, was elected King of the Romans and adopted the Hanseatic arms from that date, in addition to the lion rampant of Cornwall and Poitou. After 1272, these weights bear a fourth shield of arms, that of the de Clare family (chevrons), following Edmund's marriage to Margaret de Clare in that year. Edmund died in 1300 (when the earldom became extinct) and steelyards were banned from 1350. The Hanseatic League merchants, originally of Germanic origin, were based in London at the Steelyard. A printout of the Portable Antiquities Scheme record for this item is included.*

**608 English Medieval - A Bronze Armorial Steelyard Weight.** 70mm tall; 759 grams. Circa 1257-1272 AD. A Class II globular lead-filled cast copper-alloy (latten) armorial steelyard weight with suspension loop with two engraved lines between the loop and body; the body of the weight bearing three incised heater shields of arms, being those of England (three lions passant); the Hanseatic merchants (double-headed eagle) and those for Richard or his son



608

609



**609 English Medieval - Bronze Seal Matrix - RICARDI TAS.** 31 mm tall; 19.50 grams. Circa 14th century AD. A large, copper-alloy hexagonal 'chessman' seal matrix with trefoil suspension loop and triple collar; the 22mm circular face of the seal depicting an antlered 'sacrificial' stag with dappled hide lying down, and a cross-headed banner with 'Z' across the pole with a four-leaved plant to one side; the symbolism harks back to the legend of Herne the Hunter and to Adonis, consort of Venus (whence the derivation of the word 'venison'). The inscription reads S' RICARDI TAS; a small \* marks the top of the matrix, on the upper side surface. Superb, with rich and perfect patina.

£200 - £300

*Found near Elham, Kent, 2001.*

610



**610 English Medieval - Bronze Signet Ring.** 29mm; 12.5 grams; internal diameter 22 mm. Circa 15th century AD. A copper-alloy signet ring, its hoop tapering to the octagonal bezel, with chevron pattern to the shoulders; the bezel depicting the standing figure of a king holding a sceptre and orb. Fine.

£40 - £60

611



**611 English Medieval - Bronze Ram's Head Buckle.** 36mm; 13.29 grams. Circa 12th-13th century AD. A buckle with its bow formed as a heavily moulded and chased ram's head, with widely open throat; complete with original pin. Very fine, with excellent patination.

£60 - £90

*A most interesting and unusual form.*

612



**612 English Medieval - Lead Papal Bulla - John XXII.** 36mm. Circa 1276-1277 AD. A rare lead Papal Bulla seal of Pope John XXII. Obv: heads of Ss Paul and Peter with cross between and letters SPA SPE above. Rev: inscription IOH ANNES PP XXII in three lines. The channel where the original cord was embedded set vertically to the obverse. Fine, with slight bend along line of cord channel.

£100 - £200

*John XXII has traditionally been credited with having composed the prayer 'Anima Christi, sanctifica me...', which has come down to us in English as 'Soul of Christ, sanctify me...' and as the hymn, 'Soul of my Saviour, sanctify my breast'.*

**613 English Medieval - Six Lead 13th Century Seal Matrices.** Largest (top left) 30mm diameter. Circa 13th century AD. A group of six lead seal matrices, five with crosses or stars as a central motif, one with a fleur and variously reading SIG.IOHIS'FIL'A. Fine, all legible; a few minor scrapes.

£40 - £60





614

**614 English Medieval - Six Electrotypes of Seal Impressions.** Largest 53mm. Circa 19th century. Six uniface electrotypes taken from medieval wax seal impressions to give positives; the seals include town examples for Falmouth and Helleston together with an ecclesiastical vesica seal, two personal seals and a seal of King Edward. Very fine.

£40 - £60

*Electrotypes were commissioned, usually for the purposes of study and often in the late 19th century. The method provides an exact representation of the item being copied. Interesting.*

**615 Post-Medieval - English Gold Ring.** 21.61mm x 2mm; 1.08 grams; internal diameter 18.32 mm. Circa 17th-18th century AD. The ring's D-section hoop split with triple wire collar to receive the oval bezel cell, set with a black oval stone. Very fine, with some very slight distortion to the band. Eminently wearable and easily refinished.



615

£100 - £150

**616 Victorian - Memorial Ring.** 21.15mm; 2.27 grams. Internal diameter 17.02mm. Dated 1859. An engraved and inscribed memorial ring, hallmarked 18ct gold at Birmingham assay by maker A&S; the hoop externally inscribed 'IN ME MO RY OF' in the panels and internally inscribed in script 'Sarah Croft Obt Jany 19th 1859 Aged 79'. The heart shaped bezel in the form of a small compartment with hinged lid. Fine with hinge pin from bezel compartment lacking.



616

£100 - £150



617



618



619

**617 North America - Spearhead - Obsidian.** 110mm; 28 grams. Circa 8,000 BC. Rare finely knapped bifacial, convex section obsidian spearhead of Quinn River shape/style with notched base. Cf. Van Buren. Fine, with small loss to barb.

£90 - £120

*Ex Stiegerwalt collection (c. 1890); ex Ira S. Reed Sale 25th July 1936; ex Dr Alston Weaver collection (Alabama, USA). Offered with old annotated collector envelope.*

*Dr Alston Weaver was a dentist and enthusiastic collector of native American artefacts, especially those found locally in his home state of Alabama.*

**618 North America - Obsidian Arrowhead and Two Others.** 70, 44 and 43mm long. Circa 8,000 BCE. A black obsidian bifacial arrowhead, WITH: two other chert types. Fine.

£20 - £40

**619 North America - Five Stone Arrowheads.** From 30 to 69mm. Circa 10,000 BC. A group of five stone arrowheads in various styles and materials. Generally fine.

£10 - £30



620

**620 North America - Eighty Black and White 'Rattlesnake' Trade Beads.** Main beads 12-15mm diameter. Circa 17-18th century AD. Eighty rare 'Rattlesnake' black and white Venetian glass trade beads on modern string, interspersed with seventy nine plain black Venetian glass beads. Cf. Durbin, pp 261-289. Fine.

£150 - £250

*Found in and labelled 'Montgomery', Alabama; ex Dr Alston Weaver collection. Dr Alston Weaver was a dentist and enthusiastic collector of native American artefacts, especially those found locally in his home state of Alabama.*



621

**621 North America - Dark and Pale Blue 'Padre' and 'Pony' Trade Beads.** Main beads 12-15mm diameter. Circa 17-18th century AD. One hundred and two rare pale blue (plus one red) and eighty one dark blue (plus six pale blue) labelled Venetian glass trade beads on modern strings. Fine.

£150 - £250

*Found in and labelled 'Pensicola, Fla'; ex Dr Alston Weaver collection. Dr Alston Weaver was a dentist and enthusiastic collector of native American artefacts, especially those found locally in his home state of Alabama.*





622

**622 North America - Black Trade Beads.** Strings 66cm long each. Circa 17-18th century AD. A quantity of rare black Venetian glass trade beads on two modern strings. Cf. Durbin, pp 261-289. Fine. £150 - £250

*Found in and labelled 'Ft Conde, Mobile'; ex Dr Alston Weaver collection.*

*Dr Alston Weaver was a dentist and enthusiastic collector of native American artefacts, especially those found locally in his home state of Alabama. These beads were often used for sewn beadwork.*



623

**623 North America - Tubular, Round and Facetted Trade Beads.** Main beads about 10mm diameter. Circa 17-18th century AD. Five rare facetted clear quartz beads with fifty eight red or pale tubular and twenty five striped Venetian glass trade beads on modern string. Cf. Durbin, pp 261-289. Fine. £120 - £180

*Found in and labelled 'Leedstown, Va'; ex Dr Alston Weaver collection.*

*Dr Alston Weaver was a dentist and enthusiastic collector of native American artefacts, especially those found locally in his home state of Alabama.*



624

**624 North America - Multicoloured Trade Beads.** Strings 66cm long each. Circa 17-18th century AD. A quantity of rare mixed colour and size Venetian glass trade beads on two modern strings. Cf. Durbin, pp 261-289. Fine. £150 - £250

*Found in and labelled 'Tuplo, Miss'; ex Dr Alston Weaver collection.*

*Dr Alston Weaver was a dentist and enthusiastic collector of native American artefacts, especially those found locally in his home state of Alabama.*



625

**625 North America - Small 'Seed' Trade Beads.** Strings 1.75m and 1.0m long. Circa 17-18th century AD. A quantity of rare small blue and white Venetian glass 'seed' trade beads on two modern strings. Cf. Durbin, pp 261-289. Fine. £100 - £150

*Found in and labelled 'Pontotoc, Miss'; ex Dr Alston Weaver collection.*

*Dr Alston Weaver was a dentist and enthusiastic collector of native American artefacts, especially those found locally in his home state of Alabama. These beads were often used for sewn beadwork.*

**626 North America - Five Copper Trade Bracelets.** From 59 to 72mm. Circa 17-18th century. A group of five plain copper Indian trade bracelets. Fine. £90 - £120

*Ex Dr Alston Weaver collection (Alabama, USA).*

*Dr Alston Weaver was a dentist and enthusiastic collector of native American artefacts, especially those found locally in his home state of Alabama. These copper bracelets were traded by European merchants to the native Indian peoples of North America, often for furs.*



626



627

**627 South America - Chimu Culture - Silver Kero Face Beaker.** 125mm tall; 43 grams, Circa 1300-1500 AD. A classic, very rare Chimu Culture (Northern Peru) silver Face Beaker or Kero, made by hammering a very thin sheet of silver over a wooden core and then adding detail by hand; depicting a hook-nosed male face with avian qualities, almond eyes, pronounced ears and mouth, collar and a stepped headdress, forming the rim; at the rear a representation of a hairpiece or cloak. A marvellous example of the art of silversmithing; the use of silver is usually associated with the moon. Cf Museo Larco (ML 100746, etc); cf Museo Chileno de Arte Precolombino (MCHAP 0298, etc). Some distortion, minor perforations or small splits.

£1,000 - £1,200

*Ex old English collection.*

*This lot is accompanied by a Certificate issued by Oxford X-ray Fluorescence Ltd, indicating the composition of the metal.*

**628 South America - Nasca/Nazca Culture - A Polychrome Ceramic Bowl.** 90mm high, 110mm diameter. Circa 300-500 AD. A Nasca IV Period flared-rim bowl with slightly rounded base and polychrome painting, the main design of a stylised human face with elsewhere a variety of Nasca symbols and images. Cf Proulx; cf Hearst Museum (4-9098 - for style of face). Very fine.

£200 - £300



628







Reverse detail

629

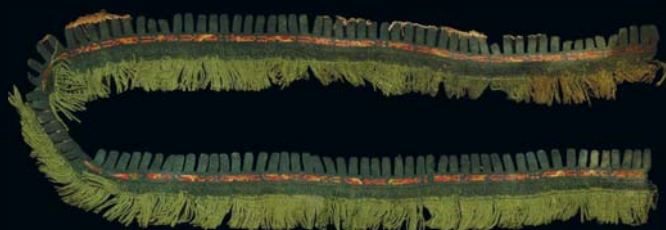
**629 South America - Nasca/Nazca Culture - Woven Hemmed Mantle Cloth.** 50cm square. Circa 500-1,000 AD. An assemblage comprising a mantle of two plain brown woven panels stitched together with attached woven multi-coloured hems on red backgrounds; the hems being 50mm wide, with one hem depicting a repeated bird-in-panel motif and the other a repeated glyph motif. Generally very fine, some minor damage to the plain cloth panels; the hems excellent with good colour.

£400 - £600

**630 South America - Nasca/Nazca Culture - Woven Mantle Hem.** 96cm long Circa 500-1,000 AD. A woven mantle hem with fringe, 60mm wide, the main portion depicting a dentilled upper edge, with evidence of the brown mantle cloth attached, in a dark blue fabric bearing a repeated glyph sequence in red; the lower fringe in green threads. Generally very fine with good colours.

£100 - £200

630





631

**631 South America - Paracas Culture - Pair of Ceremonial Turban Tassels, Spindle and Bone Comb.** 180mm long. Circa 1,500 AD. Ceremonial display objects from the Paracas peninsula in southern coastal Peru, comprising a pair of cord turban tassels each with a shaft covered in woven fabric depicting geometric lozenge shapes in several colours on white and red backgrounds; the tassels formed of red cords with frayed ends and one with the thin cord suspension ties attached. TOGETHER WITH: a carved bone flat comb (165 mm long) with five teeth AND a spindle with a dark-toned bone tapered shaft (180 mm long) bearing a shaped clay whorl. Cf Richard F. Townsend 'The Ancient Americas'. Very fine with good colours.

£150 - £250

*Ex old English collection.*

**632 South America - Shell Necklace and Ceramic Head.** From 38 to 78mm, head 44mm wide. Circa 500-1,000 AD. Necklace assemblage comprising five geometric necklace plates, variously drilled for linking and cut in nacre shell. TOGETHER WITH: a painted ceramic male head from a small figurine, with well detailed features. The necklace plates very fine.

£200 - £300



632

633 **Bronze Age - Near East - Gold Repoussé Funerary Belt Plate.** 330mm long; 70mm wide. Circa 2nd-1st millenium BC. An extremely rare and very large, thin repoussé gold rounded rectangular panel with a small fixing hole at each corner and with a perimeter border of two lines of small pellets, a line of large pellets, a line of saltire crosses and a line of small pellets; the central area dividing into three equal panels by rows of chevrons, dashes and other ornaments; each of the three panels with two rows of triple-lined diamonds with central pellet-in-annulet, a central row of triple annulet-and-pellet motifs plus four rows of double-line diamonds. The workmanship of high quality with exquisite embossing. Cf. Higgins. Fine, with two partial splits and two corners with very slight loss.

£2,500 - £3,500

*These delicate plates and panels are usually associated with funerary use, either as belt plates or diadems. This example would be large for a diadem.*







634

**634 Bronze Age - Near East - Gold Pin with Bull's Head Carved Stone.** 80mm long overall; 2.80 grams. Circa 2nd millenium BC. A fine gold pin with the carved black stone head of a bull affixed as the finial. Fine; the stone with small chip to one ear.

£200 - £300

**635 Achaemenid - Silver 'Lotus' Phiale.** 98mm diameter, 36mm tall; 80 grams. Circa 5th century BC. A repoussé moulded lotus bowl or phiale, its central omphalos domed internally and the rim flared and rolled. Fine and pleasing.

£1,000 - £1,500



635





636

**636 Bronze Age - Luristan - Lion's Head Terminal Bronze Belt.** 280mm diameter; 30mm wide. Circa 1st millenium BC. A very rare bronze strap belt, the main strap being ornamented with an embossed series of running antelopes, the terminals formed as profile snarling lion's heads with a rosette behind. Cf. Porada. Fine, with some minor restoration.

£700 - £900

**637 Bronze Age - Luristan - Ram's Head Pin.** 225mm long. Circa 1st millenium BC. A heavy cast pin or spike with the finial formed as a substantial ram's head with protruding eyes and curved horns, and the shaft with three thin collars and a small crouching lion. Cf. Porada. Fine.

£700 - £900

**638 Bronze Age - Luristan - Two-Piece Staff.** 320mm overall; the head 130mm. Circa 1st millenium BC. A rare staff with cast head displaying two extended and stylised lions; the shaft with collars at intervals. Cf. Porada. Fine.

£700 - £900

*Ex German sale, lot 13, April 2009 (extract from catalogue included).*



637

638



639

**639 Bronze Age - Luristan - Three Bronze Spearheads.** 200, 190 and 190mm long. Circa 1,000 BC. Luristan culture. A group of three tanged bronze spearheads. Fine.

£90 - £120



640

**640 Bronze Age - Luristan - Three Bronze Spearheads.** 265, 240 and 230 mm long. Circa 1,000 BC. Luristan culture. A group of three tanged bronze spearheads. Cf. Khorasani. Fine.

£90 - £120

**641 Bronze Age - Luristan - Two Bronze Spearheads.** 315 and 240mm long. Circa 1,000 BC. Luristan culture. Two tanged bronze spearheads. Cf. Khorasani. Fine.

£50 - £70

**642 Bronze Age - Luristan - Four Bronze Arrowheads.** Largest 140mm. Circa 1,000 BC. Luristan culture. A group of four tanged bronze arrowheads Cf. Khorasani. Fine.

£60 - £90

**643 Bronze Age - Long Pin and Two Hair Rings with Roman Ear Scoop and Bangle.** Pin 205mm long. Circa 1000 BC. A long pin with bifurcated and scrolled head. WITH: a pair of wire hair rings, a Roman ear scoop and a plain wire bangle. Generally fine.

£40 - £60



645

**644 Bronze Age - Three Large Headed Pins.** Largest 100mm long with 45mm diameter head. Circa 2,000 BC. Three Near Eastern bronze pins each with large, flat and circular head. Fine.

£50 - £70

**645 Bronze Age - Swat River Valley - Bronze Axe.** 1.230 Kg. Circa 2,000-1,000 BC. A rare and very substantial bronze axe or axe-hammer, the flared blade of typical form with a narrow rectangular hammer face at the butt and a circular perforation to receive the shaft. Very fine.

£120 - £200



646

**646 Bronze Age - Swat River Valley - Bronze Axe.** 1.005 Kg. Circa 2,000-1,000 BC. A rare and substantial bronze axe or axe-hammer, its flared blade of typical form, with a narrow rectangular hammer face at the butt and a circular perforation to receive the shaft. Very fine.

£120 - £200

**647 Bronze Age - Four Stone Seals.** Largest 41mm diameter and 30 grams. Circa 2,000 BC. Four single-sided perforated stone seals: two depicting goats, one a stylised figure and the last a geometric pattern, possibly representing a palm leaf. Fine.

£60 - £90

648



649



**648 Bronze Age - Five Stone Cylinder Seals.** Largest 36 mm long. Circa 2,000 BC. Five perforated stone cylinder seals, each depicting human or animal designs. Very fine.

£200 - £300

*Bought in London in the 1960s.  
Four on custom made stand mounts, including an impression, and each labelled on the base.*

**649 Bronze Age - Four Stone Cylinder Seals and 1 Other.** Largest 32 mm long. Circa 2,000 BC. Group of four perforated stone cylinder seals plus one round type. Depicting various geometric and abstract designs. Very fine.

£200 - £300

*Bought in London in the 1960s.  
Three with a custom made stand also displaying an impression from the seal and each labelled.*





652

**650 Bronze Age - Swat River Valley - Ten Clay Oil Lamps.** Average 60 mm diameter. Circa 1,500-500 BC. Gandhara Culture. A group of ten simple clay oil lamps, each with a pinched spout. Generally fine.

£100 - £180

**651 Iron Age - Pakistan - Swat River Valley - Iron Spearhead.** 485mm. Circa 500 BC-100 AD. A socketted iron spearhead, with remnant of wood shaft (dissicated); the triangular blade with incised decoration of crescents and lines at the base; the socket forged from the stem, with incised chevron decoration and shaft-retaining rivet. Fine, with some slight distortion to the blade.

£90 - £120

**652 Bronze Age - Anatolia - Carnelian and Other Bead Necklace.** 60cm. Circa 3,400 BC. Anatolia region. A string of mixed and well matched clay, natural stone, carnelian and glass beads with modern string and clasp. Cf. Dubin. Fine.

£100 - £200

**653 Bronze Age - Holy Land - Storage Vessel.** 270mm high x 290mm wide. Circa 2,000 BC. Holy Land. A rare large storage vessel with chevron ornament incised on shoulders. Scarce. Very fine.

£300 - £500

**654 China - Neolithic - Majiayao Culture - Painted Earthenware Pitcher.** 295mm high x 275mm wide. Circa 2,300-2,050 BC. Machang Phase, Gansu or Qinhai province. A two-handled geometric earthenware pitcher, the painted ornamentation of four chequered roundels in red and black linked by black linear and arc decoration and the rim painted with chevrons, dashes and circles, in red and black. Cf. Metropolitan Museum of Art. Generally fine; some abrasion affecting part of painting.

£300 - £500

651





653



654





656

**655 China - Ming Dynasty - Three Stemmed Cups and Two 'Feeders'.** From 72 to 87mm diameter, Feeders 78 x 87mm. Circa 17th century. Ming dynasty. Three small stemmed cups; two with blue glaze decoration on a pale background. OFFERED WITH: two 'baby feeders' with spout and finger hole; one with blue glaze decoration. Generally very good with no chips or cracks. Some glaze crazing and staining.

£60 - £80

*Uncertain but likely sea salvage.*

**656 Egypt - Three Old Kingdom Marble Maceheads.** 55 - 58mm wide. 3rd millennium BC. Three piriform cream marble maceheads, pierced vertically; this type replaced the disc macehead of the Naqada II period of pre-dynastic Upper Egypt. Very fine.

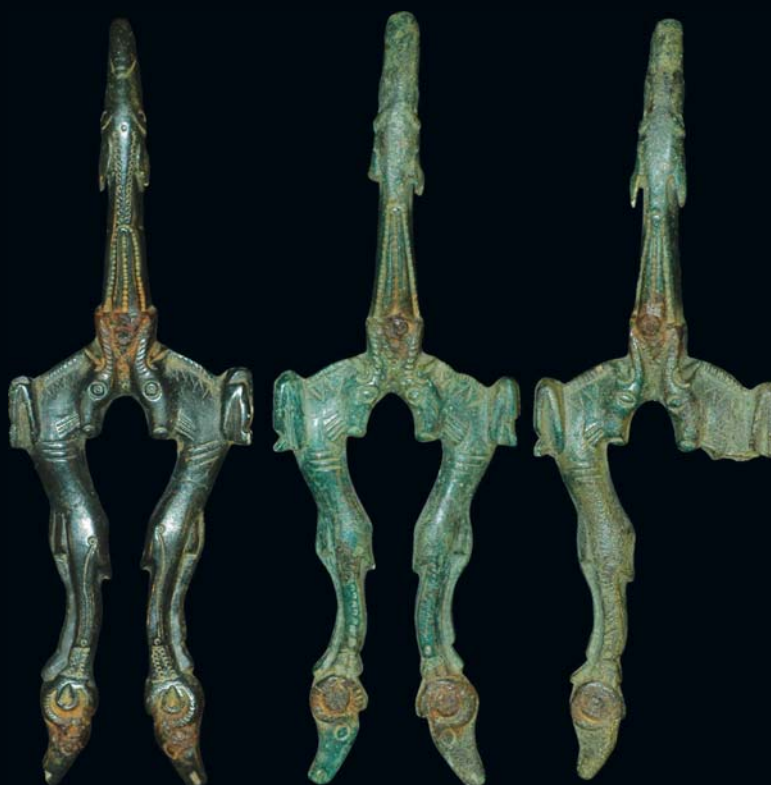
£200 - £300

*From a deceased estate.*

**657 Italic - Set of Three Bronze 'Antelope' Belt Hooks.** 120 - 122mm. Circa 4th century BC. Italic, from the Pre-Roman Era. A set of three bronze zoomorphic belt hooks with traces of iron rivets for securing to belt plates; the legs formed as a pair of elongated antelopes, with horned heads looking back over their shoulders, with dog's head and ram's head terminals; workmanship delicate and finely detailed. Cf. Bonhams, 29th April, 2009, lot158 (for a set of three extremely similar examples) One fine, one with minor repair and one damaged.

£300 - £500

*From a deceased estate.*



657





658

**658 Italic - Set of Three Bronze Belt Hooks.** 85 - 100mm. Circa 4th century BC. Italic, from the Pre-Roman Era. A set of three bronze belt hooks with traces of iron rivets for securing to belt plates; vegetal ornament on the elliptical plates; finely depicted canine-head hook terminals. Cf. Bonhams, 29th April, 2009, lot158 (for a set of three similar examples) Generally fine, one lacking terminal loop and one lacking hook end.

£200 - £300

*From a deceased estate.*

**659 Italic - 'Set' of Three Bronze Belt Hooks.** 118 - 127mm. Circa 4th century BC. Italic, from the Pre-Roman Era. A set of three bronze belt hooks, with traces of the iron rivets once securing them to belt plates; the hook terminals in the form of canine heads; the plates engraved with scrolls, leaves and vegetal ornaments. Cf. Bonhams, 29th April, 2009, lot158 (for a set of three similar examples)



659

One fine with evidence of tinning to the surfaces; two with slight loss to edges.

£200 - £300

*From a deceased estate.*

**660 Italic - Two Pairs of Bronze Belt Hooks and a Single.** 67 - 117mm. Circa 4th century BC. Italic, from the Pre-Roman Era. Two pairs of bronze belt hooks and a single; the pairs both including slender shafts with canine head terminals to each end (one with an ancient repair); the single with a pierced plate design enhanced with engraving and canine head hook terminal. Cf. Bonhams, 29th April, 2009, lot158 (for a set of three similar examples) The pairs fine; the single with some loss to plate.

£200 - £300

*From a deceased estate.*



660



661

**661 Italic - 'Set' of Four Bronze Belt Hooks.** 99 - 109mm. Circa 4th century BC. Italic, from the Pre-Roman Era. A set of four bronze belt hooks with traces of iron rivets to fasten them to segmented beltplates; the shafts terminating in canine head hooks; the plates shaped and engraved with scrolls, spirals and ornamentation. Cf. Bonhams, 29th April, 2009, lot158 (for a set of three similar examples) Three fine; one with slight loss at end of plate.

£200 - £300

*From a deceased estate.*

**662 Italic - Collection of Five Bronze Belt Hooks.** 92 - 110mm. Circa 4th century BC. Italic, from the Pre-Roman Era. A collection of five highly decorated bronze belt hooks with traces of iron rivets for originally securing to segmental plates; the ornamentation reminiscent of the contemporary Hallstatt Culture; the motifs drawn from vegetal forms. Cf. Bonhams, 29th April, 2009, lot158 (for a set of similar examples). Generally fine.

£200 - £300

*From a deceased estate.*

662





663



664

**663 South Italian Black Glazed Pottery - Plate, 2 Cups and Jar.** Plate 142mm, the rest 39 - 95mm high. Circa 6th-4th centuries BC. South Eastern Italy. A raised plate with a shallow bowl and rounded rim on a round base, a wine cup with deep bowl and flat rim with a single vertical looped handle, plus two other round rimmed open cups, one with two handles. Cf. Beazley, EVP. Fine.

£150 - £250

**664 South Italian Black Glazed Pottery - Plate, Cup and Two Jars.** Plate 147mm wide, the rest 45-100mm high. Circa 6th-4th centuries BC. South Eastern Italy. A ceramic group comprising a raised dish with a shallow bowl and rounded rim on a round base; two jars with deep bowls with flat rims and single vertical looped handles; one square-rimmed open cup. Cf. Beazley, EVP. Fine.

£150 - £250

**665 Roman - Four Bronze Phallic Pendants and Mounts.** Group of four Roman bronze phallic amulets. Including one pendant (well modelled); two mounts and a stylised pendant. Cf. Benet. Generally fine. The pendants undamaged.

£100 - £150

**666 Roman - Nine Bronze 'Ring' Keys.** Group of nine Roman bronze 'ring' keys. Various styles/sizes. Cf. Benet. Fine. All undamaged.

£200 - £300

**667 Roman - Nine Bronze 'Ring' Keys.** Group of nine Roman bronze 'ring' keys. Various styles/sizes. Cf. Benet. Fine. All undamaged.

£200 - £300

**668 Roman - Six Bronze Military Items.** A group of six Roman bronze military items comprising a large sword scabbard chape; a tinned pendant; four military mounts. Generally fine.

£300 - £350





669

**669 Roman - Italica Legion - Clay Brick.** 200mm wide x 195mm high. Circa 2nd centry AD. A Roman ceramic brick stamped 'LEG I ITAL' in reverse, made by the Italica Legion at Olpia Oescus on the lower Danube (one of the Emperor Trajan's strategic bases prior to the second invasion of Dacia in 106 AD). Cf. Speidel & Reynolds. Fine.

£100 - £150

**670 Roman - Legion XIII Gemina - Clay Tile.** 230mm x 110mm. Circa 1st BC - 1st Century AD. A very rare large Roman red ceramic tile bearing the impressed stamp L XIII for the Legio XIII Gemina, formed by Julius Caesar in 57 BC. (This legion famously crossed the Rubicon with him in 49 BC.) Cf. Lendering. Very fine.

£150 - £250

*From the wreck of a Roman ship carrying bricks, paving tiles, roof-tiles and amphora. Excavated in the Mediterranean (south of France) in 1980 from a depth of 44 meters; with a copy of the archaeological report, including drawing of the wreck site and various underwater images; removed from area D7 XII on the site ground-plan.*



670





671



672

**671 Roman - Group of Five Cups and Jars.** Cups (80mm); flagon (105mm); three-handled jar (90mm by 120mm diameter); jar (110mm by 125mm diameter). A group of five Roman vessels comprising two small 'poppy-head' style cups; a small greyware flagon; a three-handled jar; a single-handled jar Fine.

£150 - £250

**672 Roman - Group of Five Cups, Bowls and Dishes.** A group of five Roman vessels comprising two shallow cups; small jar and two shallow dishes. Fine.

£150 - £250

From an old English collection.

From an old English collection.





673



674



675

**673 Roman - Group of Six Glass Bottles and Phials.** 40 - 70mm high. Circa 3rd century AD. A group of six Roman glass bottles and phials comprising two mould-blown bottles with linear ornament and four free-blown phials. Cf. Guildhall Collections. All very fine.

£120 - £180

**674 Roman - Group of Six Glass Bottles and Phials.** 50 - 80mm high. Circa 3rd century AD. A group of six Roman glass bottles and phials comprising three mould-blown with linear ornament and three free-blown phials. Cf. Guildhall Collections. All fine, some with minor damage.

£120 - £180

**675 Roman - Group of Six Glass Bottles and Phials.** 40 - 70mm high. Circa 3rd century AD. A group of six Roman glass bottles and phials comprising two mould-blown with linear ornament and four free-blown phials. Cf. Guildhall Collections. All fine.

£120 - £180



676

**676 Roman - Group of Six Glass Bottles and Phials.** 50mm - 65mm high. Circa 3rd century AD. A group of six Roman glass bottles and phials comprising one mould-blown globular form; one mould-blown cylindrical with linear ornament; four free-blown phials. Cf. Guildhall Collections. All very fine.

£120 - £180

**677 Roman - Forty pieces of Decorated Wall Plaster.** 8.5 kilograms (total). Circa 1st century AD. An interesting group of forty fragments of fresco-painted thick wall plaster; mostly geometric patterns in various pastel colours. Well preserved and stable, many with good colour.

£150 - £250

*Reputed to be from Pompeii, Italy. Acquired in the 19th century; ex Jeger collection, Switzerland (with copy of letter from the collector, regarding this material).*





678 **Neolithic Africa - Seven Stone Axes.** 80 to 164mm. Circa 7,000 BCE. Sahara region. A group of seven pecked/ground stone axes in a variety of stone materials. Fine.

£100 - £150



681 **Indus Valley Bronze Age - Three Pottery Vessels.** 55 - 85mm high. Circa 2,000 BC. Three painted pottery vessels, all with applied ornament: one with coloured banding encircling the body; one with a band of geometric zigzag ornament, the intervening triangles cross-hatched; one with a band of geometric ornament divided into panels, each panel subdivided into triangles with the upper and lower parts cross-hatched. Cf. Satyawadi. Very fine, some very small rim chips.

£90 - £120



679 **Phoenician Bronze Age 'Holy Land' - Four Dipper Cups.** 70 - 120mm high. Circa 3200 - 2200 BC. Early Bronze Age. Four large pottery dipper cups, globular in shape with flat bases, flared rims and thick round-sectioned handles. Cf. Amiran, R. Ancient Pottery of the Holy Land. Fine.

£100 - £200



682 **Indus Valley Bronze Age - Three Pottery Vessels.** 65 - 75mm high. Circa 2,000 BC. Three painted pottery vessels, all straight-sided with applied geometric ornament. Cf. Satyawadi. Very fine, some very small rim chips.

£90 - £120



680 **Phoenician Bronze Age 'Holy Land' - Dipper Cup and Two Jars.** 65 - 110mm high. Circa 3200 - 2200 BC. Early Bronze Age. Two globular jars with flat bases and sturdy handles, plus a dipper cup with a thick round-sectioned handle. Cf. Amiran, R. Ancient Pottery of the Holy Land. Fine.

£80 - £120



683 **Near Eastern Bronze Age - Holy Land - Pottery Bowl.** 330mm wide x 210 high. Circa 2,000 BC. A very large pottery vessel in a reddish ceramic, of classic simple form with curved sides and a band of impressed 'rope' ornament below the rim. Very fine.

£300 - £500

**684 Celtic Britain - Eight Mounts and Fittings - Depicting Human Heads.** Group of eight Celtic bronze items depicting human heads/busts. Including a knife handle; two suspended female busts; three studs; a belt/strap fitting and a terminal fitting with 'Janus' style double male head (possibly votive). Generally good.

£300 - £400

**685 Celtic Iron Age - Five Bronze Mounts.** Harness Mount 53mm long. Five Celtic bronze items. A double-trumpet harness mount; a double eye stud; a double hemisphere terminal with loop at back and two enamelled studs. Generally fine.

£200 - £300

*The harness mount with an extract from a sale catalogue , lot 642 (listing it at £100-150).*

**686 Celtic Britain - Eleven Bronze Toggles - Various Types.** Largest 48mm. Group of eleven Celtic bronze toggle fittings. Various designs/types. Cf. Benet. Generally fine.

£150 - £200

**687 Celtic Britain - Eleven Bronze Toggles - Various Types.** Largest 38mm. Group of eleven Celtic bronze toggle fittings. Various designs/types. Cf. Benet. Fine.

£150 - £200



**688 Celtic Iron Age - Marble Panel - Horse and Rider.** 120mm high. Circa 1st century AD. A Gaulish arched-top marble tablet, carved in low relief, depicting a Celtic warrior on horseback brandishing a circular shield; a 'skull' shrine (cf. Roquepertuse) depicted in front of the figure. Very fine.

£300 - £400

**689 Anglo-Saxon - Five Bronze Items.** Key 40mm long. Five Saxon bronze items. Including a pair of tweezers; a small buckle (lacking pin) with some tinning and ornament; a 'bookmark' with sliding clamp collar; an equal arm brooch with ring-and-dot ornament and a small key with ring-and-dot ornament and plain wards. Cf. Benet. Generally fine.

£200 - £300

**690 Viking - Three Bronze Items.** Link 75mm long. A group of three copper-alloy Viking period items comprising an animal-headed zoomorphic stirrup mount; a sword pommel cap; a strap junction link. Cf. Benet. Fine.

£150 - £200

**691 Group of Mixed Items - Celtic, Roman, Medieval and Post-Medieval from Various Cultures.** A mixed group of silver and bronze items, WITH fourteen beads (Roman/Saxon, stone/glass); the silver items including two medieval dress hooks, five finger rings (various periods) and one pair of ancient earrings; the bronze items including Celtic toggle, a Roman(?) finger ring and two other rings; a European buckle plate depicting a lion and two Byzantine pendant crosses. Generally fine. Interesting group.

£100 - £200

**692 Group of Fifteen Mixed Items.** Human figure 75mm tall. Various Cultures. A group comprising two votive miniature cauldrons; a Roman military phallic pendant; two Roman bust mounts and a similar stud; three 'bird' mounts/fittings; a casting of a human left foot; a Roman iron finger ring with onyx intaglio gemstone of a standing figure (iron ring part only a fragment); a slender cast human figure; two Tudor belt mounts. Mixed condition but mostly good; interesting.

£50 - £100

**693 Group of Mixed Items.** A group of mixed items comprising: two Roman lead slingshots; three circular perforated lead weights; one medieval 'hammer' knife pommel; four bronze coins (copies) and a quantity of fragments. Average.

£30 - £50

**694 Group of Four Mixed Items.** Mirror 190mm diameter. A mixed group of four items comprising a bronze mirror with hinged cover (cover detached and mostly lacking); an Egyptian moulded lion with pale blue glaze (finely detailed); an Egyptian black basalt carved head of an animal; the lower portion of a Roman marble panel depicting a horse and rider. Variable condition.

£50 - £70



**General**

TimeLine Auctions Ltd acts as agent for the seller only.

The sale shall be conducted by the Auctioneer nominated by TimeLine Auctions Ltd. The Auctioneer shall have sole discretion as to the conduct of any sale and his decision shall be final in all matters. TimeLine Auctions Ltd reserve the right to refuse entry, decline bids or to expel any person from any sale, at their sole discretion.

**Sellers**

All goods submitted to TimeLine Auctions Ltd for sale by public auction will be lotted and catalogued at the discretion of TimeLine Auctions Ltd.

**Selling Commission:**

Standard Rate is 15% of the Hammer Price. Special Rates may be applied for individual items of significant value, or for collections, at the sole discretion of TimeLine Auctions Ltd.

**Storage Charges:**

Daily or such other charges for storage of goods submitted for public auction may be levied at the discretion of TimeLine Auctions Ltd. Such charges may include a charge for collection of goods from the Seller's home/premises, if appropriate.

**Insurance Charges:**

Daily or such other charges for insuring Seller's goods may be levied at the discretion of TimeLine Auctions Ltd. Such insurances and liability shall commence from the date of receipt of any goods and shall expire at the time the hammer falls; and will be limited in value to the amount of any reserve, or to the amount of the low estimate, as relevant.

**Other charges:**

Special charges for any unusual research, special imaging, testing, consultation with external specialists, conservation, cleaning or other services in connection with any aspect that is considered necessary for the proper presentation of any goods offered for sale will be levied at the discretion of TimeLine Auctions Ltd; however, the need for such services and costs will be advised in advance.

**Value Added Tax:**

Where applicable, Value Added Tax at prevailing rate(s) will be applied to all of the Selling Commission and other Charges due from the Seller. Sellers resident outside of the United Kingdom or European Union should note that Import VAT may be payable at the time of importation to the United Kingdom on a valuation basis, with adjustment made after the auction, based upon the final Hammer Price(s).

**Reserves:**

The Seller may set a Reserve Price, being the Minimum Hammer Price at which the goods may be sold, provided that no Reserve may be set for any item having an Estimate lower than £100 or such other sum as may be agreed at the discretion of TimeLine Auctions Ltd.

**Estimates:**

The setting of Estimates shall be at the discretion of TimeLine Auctions Ltd; and the amount of any Estimate shall not be taken as being indicative of the true Value of any Goods.

**Unsold Lots:**

In the event of any Lot being unsold, no Selling Commission shall be payable unless that Lot is subject to a Reserve when a Selling Commission Rate of 5% of the Reserve sum shall be payable. Charges for Storage, Insurance, or Other Services may be payable in all instances, at the discretion of TimeLine Auctions Ltd. Sellers are responsible for insuring any Lots that remain unsold, from the time the Hammer falls; and sellers must make arrangements for collection of the Unsold goods immediately after the auction ends. Additional costs for delivery of Unsold goods to the Seller may be applied, at the discretion of TimeLine Auctions Ltd.

**Void Sales:**

In the event of any dispute, TimeLine Auctions Ltd shall hold the sale Void pending resolution and no monies shall be paid over until the dispute is finalized. The Seller shall be liable for the return of any monies paid over by TimeLine Auctions in the event of a

dispute raised by the Buyer being upheld.

**Acceptance of Selling Terms:**

By submitting any goods for sale by auction, the Seller is deemed to accept all of the Terms and Conditions of Sale and to warrant that he/she is the legal and beneficial owner of all of the goods. The Seller agrees to fully indemnify TimeLine Auctions Ltd against any claims.

**Buyers/Bidders****Caveat Emptor:**

The Buyer must fully satisfy himself as to the description, genuineness, condition or value of any Lot(s) and shall not rely upon the Catalogue, images, or upon any statement made by TimeLine Auctions Ltd regarding any Lot. TimeLine Auctions Ltd act solely as agent for the Seller and all matters pertaining to the sale of any Lot are matters between the Seller and Buyer.

**Bidder Registration:**

All persons intending to bid at any auction, whether in person or by Commission Bid, shall Register their personal details with TimeLine Auctions Ltd prior to bidding. Buyers may be asked to provide an acceptable form of proof of identity and proof of address. TimeLine Auctions Ltd reserves the absolute right to refuse to register any Bidder or to refuse any Bid at their sole discretion and without stating any reason. Bidders may register in advance of the date of any auction or on the day of the sale.

**Bidder Numbers:**

All Bidders will be allocated a Bidder Number which must be shown to the Auctioneer at the time of bidding and when the Hammer falls. Buyers are at all times responsible for their Bidder Number Card.

**Commission Bids:**

Although it is best for Bidders to attend the sale and to make their Bids in person, at the request of a Registered Bidder, TimeLine Auctions Ltd will exercise bids on behalf of any Bidder who is unable to attend the Sale. Instructions to Bid must be in writing and stipulate the Lot Number(s) and Maximum amount of the Bid(s). Bids to 'buy' will not be accepted. The Auctioneer will execute Commission Bids at his/her discretion depending upon competing bids from the floor or elsewhere. In the event that two Commission Bids of the same amount are received, then the one first received will have priority. All Bids will be made at the lowest level possible. There is no charge for this Service but TimeLine Auctions Ltd will accept no liability for errors or for failing to make any Bid.

**Conduct of the Sale:**

The Auctioneer shall conduct the sale entirely at his/her discretion for all matters and his/her decision shall be final and binding on all participants at the sale. The Auctioneer may execute Bids on behalf of absent Bidders or on behalf of Sellers up to the amount of any Reserve. Bidding increments shall be at the discretion of the Auctioneer but shall generally be as set out below:

Up to £100 - in increments of £5  
From £100 to £500 - in increments of £10  
From £500 to £1,000 - in increments of £20  
From £1,000 to £2,000 - in increments of £50  
From £2,000 to £5,000 - in increments of £100  
From £5,000 - in minimum increments of £200 or at Auctioneer's discretion

**Buyer's Premium:**

The Buyer shall pay the Buyer's Premium in addition to the Hammer Price on all lots purchased. The Buyer's Premium Rate shall be 15% and VAT will be payable, at the prevailing rate, in addition.

**Liability for Goods:**

The Buyer is responsible for all Goods purchased, from the time the Hammer falls. Any Goods not collected from the Sale venue on the day of Sale will be removed by TimeLine Auctions Ltd to a place of storage, at their discretion. Storage Charges may become payable for uncollected goods. For Commission Bidders, unless noted in the Catalogue as being for 'collection only', shipping costs will be invoiced and must be paid, together with all sums due, before goods will be shipped.

**Collection of Goods:**

Most Lots will be present at the Sale venue and may

be collected immediately after the Hammer falls, on full payment being made. TimeLine Auctions Ltd, at the specific request of the Buyer, will make arrangements to ship goods to the Buyer's Registered Address at such cost as will be advised by TimeLine Auctions Ltd. Certain Lots, by virtue of size or other difficulty, may not be present at the Sale venue and any Buyer will be required to make prompt arrangements for collection from a storage location designated by TimeLine Auctions Ltd.

**Invoices:**

Invoices will be issued at the Sale venue or, for those not attending, shortly afterwards. Payment in full is required and funds must be fully cleared before any Goods may be collected or shipped.

**Payment:**

Payment becomes due at the time the Hammer falls. Settlement of Invoices is required within 14 days of the date of the Sale. Interest, at 5% above the prevailing Lloyds TSB bank base rate, will be payable for late payment. TimeLine Auctions Ltd will accept payment by any of the following methods:

Cash in Pounds Sterling - up to a maximum of £5,000 at any one Sale

Cash in Euros/\$US - at the rate prevailing - up to a maximum of £5,000 (equivalent)

Sterling Cheque - Goods will only be released upon clearance

Debit Card - to any amount

Credit Card - to any amount - a 3% surcharge will be applied

Banker's Draft - to any amount - by prior arrangement

Bank Transfer - to any amount - by prior arrangement

**Export Licences:**

For all items potentially requiring an Export Licence, all Buyers with a Registered Address outside the United Kingdom will be required to sign an indemnity waiver on collection of their goods. TimeLine Auctions Ltd will make applications for Export Licences on behalf of a Buyer, after full payment has been cleared, for any Lot, on request. There is no charge for this Service but protracted periods may be required to complete the process. It is the Buyer's sole responsibility to make any necessary enquiries, prior to Bidding, regarding Export Licence procedures. The refusal of an Export Licence shall not be grounds for cancelling the purchase.

**Value Added Tax:**

Value Added Tax at the prevailing rate(s) will be payable in addition on the Buyer's Premiums, shipping costs or on any other Charges made by TimeLine Auctions Ltd. Where so indicated in the Catalogue, VAT may be applied to the Hammer Price for Lots to which the Auctioneer's Margin Scheme does not apply. Buyers with a Registered Address outside of the United Kingdom or European Union may be exempt from some aspects of VAT, provided that any Lots purchased are shipped directly by TimeLine Auctions Ltd to the Buyer's registered foreign address.

**Disputes:**

In the event of any dispute, the Buyer must notify TimeLine Auctions Ltd immediately, but in no case later than fourteen days after the date of the Sale, in writing and stipulating fully the ground for such dispute. During the progress of any dispute, TimeLine Auctions Ltd shall hold any and all monies paid by the Buyer until such time as the matter is finalised. In cases where deliberate forgery is alleged, any such claim shall be subject to review by TimeLine Auctions Ltd who may consult such experts as they deem appropriate. The responsibility for proof of forgery shall rest with the Buyer but disagreement between experts or the inability of an expert to express a definite opinion shall not be sufficient grounds. All disputes shall be resolved in accordance with English law.

**Acceptance of Buying/Bidding Terms:**

Any person bidding at any sale is deemed to have read and accepted these Terms in full and undertakes to fully indemnify TimeLine Auctions Ltd against any claims.



Sale: 19<sup>th</sup> March 2010Name:  
Address:Telephone:  
E-mail:

Office use only

Date Received:

Bidder No:

Please bid on my behalf for the following lot(s) up to the maximum bids given below. I understand that a successful bid will additionally incur a 17.25% Buyer's Premium VAT inclusive. I agree to pay all sums due promptly, including shipping, insurance and other costs as may be relevant. I am over 18 years old.

Bids must be in accordance with the increments given in our Terms and Conditions.

**All Commission Bids must be received by no later than 9pm on 18th March 2010.**

Lot No	Item Description	Max Bid £

Lot No	Item Description	Max Bid £

I confirm that I have read and agree to accept the Terms and Conditions of Sale.

Signed:

Date:

If successful, I wish to pay for my purchases by:

Cash/Cheque/Debit Card/Credit Card/Bank Transfer/Other.....\*

Please note that payments by Credit Card are subject to 3% surcharge on the total invoice price. There is no surcharge for Debit Cards. All payments must be made in Pounds Sterling.

Card Details: Mastercard/Visa/Amex/Debit Card/Switch\*

Name (as given on card):

Card Number:

Start date:

Security No: (last three digits on signature strip)

Issue No:

Expiry Date:

I will collect my purchases/Please ship my purchases and add postage costs to my invoice\*

\*delete as required